

2011

UNDERGRADUATE  
VIEWBOOK

MANAGEMENT BIOLOGY BLACK STUDIES SOCIAL STUDIES COMMUNICATION & MEDIA

SPANISH GRAPHIC DESIGN ECONOMICS

ENGAGE

QUESTION CREATIVITY EXPLORE ACHIEVE

RELATIONSHIPS DISCOVERY PERSPECTIVE INVENTIVENESS CURIOSITY WISDOM



New Paltz

STATE UNIVERSITY OF NEW YORK





INTERNATIONAL BUSINESSPHYSICSGEOGRAPHYVISUAL ARTSCOMPUTER SCIENCE  
**SOCIOLOGY**EARTH SCIENCE**FINANCE**  
**A DEGREE...AND**

**1828**  
was the year our school  
was founded as the  
New Paltz Classical Academy.

**91%**  
of our faculty were ranked  
“**excellent**” or “very good” by  
our students.

**100**  
programs of **study** available  
to our students among the  
five undergraduate schools  
and The Graduate School.

**16-1**  
is our student-faculty **ratio**.

Work	2
Play	4
Live	5
Seek	6
Trek	7
We Could Tell You...	8
Annie, Levi, Dean, Kali & Doodnath	10-29
Campus Life	30
Alumni Reflections	32
New Paltz At A Glance	34
Contact and Map	35

QUESTION**CREATE**INVENT**ACHIEVE**INQUIRE**ASPIRE**RELATE**CONSIDER**RELATIONSHIPS  
**EXAMINE****PERSPECTIVE****FRIENDSHIP**

**130+** **52%** **15,000** **9,000**

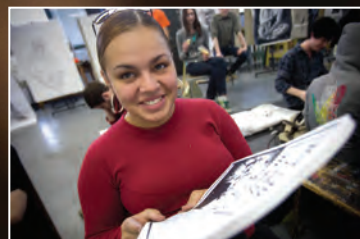




# WORK



At New Paltz, we encourage students to question, experiment and discover in ways that enable them to grow—intellectually, culturally and socially—into confident, compassionate, active participants in the world community. To get them there, we offer nearly 100 programs in the arts, business, engineering, health sciences, humanities, sciences and social sciences... all experienced within an atmosphere of learning that leads to innovative thinking.







Mind, body, spirit—every aspect of the individual is encouraged to stretch and strengthen at New Paltz. Students take part in a range of sports—from baseball and soccer, to swimming and tennis. From a friendly game of flag football to Zen Frisbee on the Old Main Quad. Surrounded by “The Gunks,” the beautiful Shawangunk Ridge, many students are inspired to try rock climbing, horseback riding, hiking, even a ruthless game of paintball now and then.



Come as you are. New Paltz’s warm, accepting environment is ideal for students of all backgrounds, cultures and political views. Students live in Residence Halls, not dorms, learning and growing in an environment that’s educationally purposeful. Connections are created, whether it’s the “Adopt a Floor” program where professors informally share their hobbies with residential students, or through our very active 130 clubs and organizations.



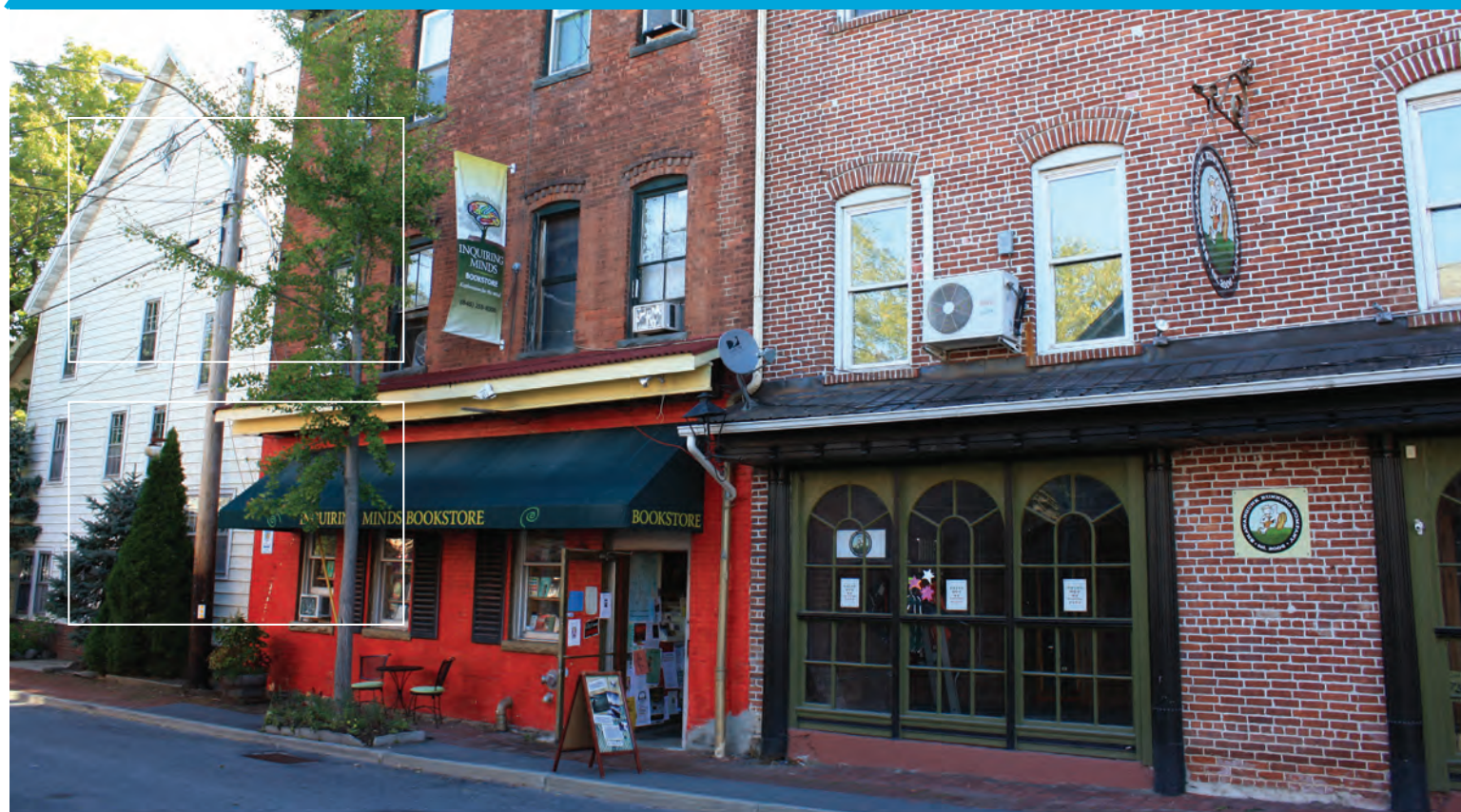


# SEEK



Nestled in New York State's picturesque Hudson Valley, New Paltz is a vibrant, historic village offering students access to quaint shops, great restaurants, a thriving artistic community, phenomenal outdoor activities and a spectacularly beautiful environment. Equally exciting is its proximity to the most dynamic city in the world, New York City. Close enough for a day trip; far enough to be surrounded in the embrace of nature.

New Paltz students have the opportunity to travel, taking advantage of a wide range of international programs—from Australia to Argentina, Jamaica to Japan. We're a leader in the field, offering study abroad programs for half a century. This expertise means that our students are thoroughly prepared—from cultural adjustments to visa requirements. We also advise on financial aid and scholarships so more students can broaden their horizons.



# TREK



## We could tell you...

that New Paltz is a creative, diverse, challenging and supportive environment where you get a degree from a highly-selective university and an education rich in experiences that will last a lifetime.

We could tell you that as a New Paltz student you will be encouraged to explore and to take intellectual risks, to find your passion and begin your path.

We could tell you about our impassioned faculty—dedicated professors who teach beyond the text—the rich culture, history and beauty of our Hudson Valley region, and all the benefits of our close proximity to New York City.

I AM AN ENGINEER I AM A PAINTER I AM A WRITER I AM AN EDUCATOR I AM AN ACCOUNTANT  
I AM AN ACTIVIST...A LEADER...A VOLUNTEER

# FIND YOUR VOICE

PERSUASIVE SHOUT IT OUT RESTRAINED INTUITIVE EMPATHETIC FORCEFUL DIPLOMATIC  
STRONG INFORMED BILINGUALSURE

## Instead,

we thought it's better to hear it from  
**ANNIE, LEVI, DEAN, KALI and DOODNATH,**  
representing each of our five undergraduate schools. And because everyone counts at New Paltz, you could hear it from other diverse voices that make up our New Paltz community.



See individual featured student pages for descriptions of images on facing page using the above key.





*My Degree?**Journalism and  
Organizational  
Communication**My Education?**Challenging myself, and  
remembering to look at  
things open-mindedly.*

PUBLIC RELATIONS COMMUNICATION STUDIES MEDIA AND SOCIETY MEDIEVAL EUROPE  
 PSYCHOLOGY ARGUMENTATION JOURNALISM  
**ANNIE**  
 ENERGETIC INVOLVED A BASSADOR  
 GREGARIOUS DEDICATED ASSURED INSIGHTFUL VOLUNTEER

*Annie Yu '11**Jam Asia, Zumba and "Who's Who with Annie Yu."*

Top, left to right: Annie with some of her suite mates in DuBois Hall ([www.newpaltz.edu/reslife/dubois](http://www.newpaltz.edu/reslife/dubois)); Annie at the Mohonk Mountain House for a Management Association visit ([www.mohonk.com](http://www.mohonk.com)); Annie (lower right corner) with her fellow Student Ambassadors in front of the Hopfer Admission Center.

“**G**rowing up in a media-saturated society, I’ve always been **FASCINATED** with the media’s influence on the public. That’s why I started off with a concentration in Public Relations. After taking some communications classes, I realized I enjoyed the **DYNAMICS** of organizations—learning how they function to maximize success. So I added on a second program, Organizational Communication. The academic **FLEXIBILITY** here allowed me to have a dual major, even take electives outside of my studies. Plus, I’ve done some **INTERNSHIPS**—this past summer I was an HR intern at an Omnicom agency in New York City.”

See pages 8-9 for key  
and full-color images.

**A. CHOPSTICKS**

“I got these from a JamAsia event in which I participated. JamAsia is a student organization on campus that puts on events and performances for a week in April to educate the campus about Asian and Southeast Asian cultures.” For a complete listing of clubs and organizations, go to [www.newpaltz.edu/sub/organizations.html](http://www.newpaltz.edu/sub/organizations.html).

**I. NEW PALTZ CLEAN SWEEP T-SHIRT**

“This was one of the very first volunteer events I attended and it was such a great experience that it encouraged me to keep volunteering. Students worked with their neighbors in town to give back to the community and to beautify New Paltz.”

**L. ST. JUDE SUNGLASSES**

“These shades are super cool and I got them from a campus-wide ‘Up ‘til Dawn’ event where students got together to write letters to our friends and family, asking for contributions to St. Jude’s Hospital.”



*Annie Yu '11**Student Ambassador and former resident of Dubois Hall*

# "I picked New Paltz

because it wasn't too far from home, it's not as expensive as a private school, and **IT HAD MY MAJOR**. But I didn't expect to stay. I thought I'd transfer out to Northeastern or Syracuse. But instead, **I FELL IN LOVE WITH THE SCHOOL!** I didn't know a SUNY school could offer so many opportunities. In high school, I was shy. I never spoke in class. But here, professors are so accessible and approachable—their offices are located right next to the classroom building. And the students—they're so nice. Now as a Student Ambassador, I speak in front of large groups. **I'VE TAKEN INITIATIVES I DIDN'T THINK I HAD THE ABILITY TO.**"

**MORE ON ANNIE AND JAMASIA:**

[www.newpaltz.edu/admissions/viewbook](http://www.newpaltz.edu/admissions/viewbook)  
[www.newpaltz.edu/admissions/viewbook/annie](http://www.newpaltz.edu/admissions/viewbook/annie)

**INFORMATION ON STUDENT AMBASSADORS:**

[www.newpaltz.edu/admissions/ambassadors.html](http://www.newpaltz.edu/admissions/ambassadors.html)

**ANNIE'S RECENT CLASSES****Fall 2010**

Intro to Plant Life  
 Writing for Digital Media  
 Argumentation  
 PR Publications  
 Media Ethics  
 Psychology of Language  
 Social Psychology

**Spring 2011**

Human Evolution  
 Small Group Communication  
 Theories of Persuasion  
 Group Behavior  
 Psychology of Language

## THE FOUNDATION

for all undergraduate education, the College of Liberal Arts & Sciences offers nineteen majors within the Humanities and Social Sciences, several minors, and many specialized concentrations. Students are encouraged to do research, fieldwork or internships in order to test theory and knowledge in real world situations.

13

**MAJORS:**

Anthropology  
 Asian Studies  
 Black Studies  
 Communication Disorders & Science  
 Communication & Media  
 Communication Studies  
 Economics  
 English  
 French  
 Geography  
 Geology  
 History  
 International Relations  
 Journalism  
 Latin American Studies  
 Philosophy  
 Political Science  
 Psychology  
 Sociology  
 Spanish  
 Women's Studies

**Pre-Professional Advising:**  
 Pre-Law



Our Communication and Media program is unique. It's liberal arts with innovative production programs. You can learn skills like video production, explore theoretical questions about communication theory or the aesthetics of video and film, you can study the role of the press in America or its legal and political underpinnings. It's not just reading and writing."

*Eugene Heath*

Interim Chair, Communication and Media and Philosophy Professor



My Degree?

Business Management

My Education?

Learning how to support other people to grow, as I grow myself.

PRINCIPLES OF MANAGEMENTRENEWABLE ENERGYMARKETINGINTRO TO AFRICA  
PRECALCULUSMICROECONOMICSFINANCE  
UPBEATFRIENDLYCENTERED  
ORIENTATIONLEADERPASSIONATEINVOLVEDDEDICATEDRESPONSIBLESENSEOFHUMOR

Levi Verges '12

Resident Assistant, Chi Alpha Epsilon and Gamer



Top, left to right: As a member of the Admission C.R.E.W. team (Campus Recruitment Event Workers) Levi talks to a future New Paltz student at the Accepted Students Open House ([www.newpaltz.edu/admissions/crew.html](http://www.newpaltz.edu/admissions/crew.html)); Levi joins his fellow RA's during Spirit Weekend, a popular event that brings together each resident hall (students, Resident Assistants and Resident Directors) as teams competing in a wide range of activities, events and displays to "show their spirit."; Levi with his fellow Orientation Leaders.

“I feel ethics in business is really important. People need to know that the individuals in charge of business **KNOW** what they're doing and won't abuse their position. In recent years, there have been a lot of situations that reveal corrupt business practices. I want to change that. I believe you can **SUCCEED** in business and help your employees maximize their potential. Nothing makes me happier than **HELPING OTHERS** grow and develop.”

H. FRIENDSHIP BRACELET

"During my first semester as a Resident Assistant, it was a really difficult semester right away. I had a lot of new responsibilities and I was really nervous about maintaining all of my new positions. The friendship bracelet was made by one of my residents and it made me feel really good about myself. That resident really appreciated me and everything I was doing and we have a strong bond to this day."



K. SONIC BUDS

"Sonic the Hedgehog was the first video game I ever played. I was in need of some headphones and one of my closest friends (whom I met in New Paltz) surprised me with the most amazing pair of headphones!"



M. QUARTER WRAPPED IN FOIL

"I spent New Year's 2011 here in New Paltz with my fellow Orientation Leaders. Our Senior Orientation Leader had some crumb cake that his mother made. His mother had a tradition of hiding a foil-wrapped quarter at the bottom of one of the crumb cakes. Whoever picked out the crumb cake with the quarter would be guaranteed good luck for that whole year. I happened to pick out that quarter and it has been quite an amazing year for me so far."



See pages 8-9 for key and full-color images.



*Levi Verges '12**Orientation Leader and former resident of Bevier Hall**"I'll be honest..."*

when I came here, I didn't know what **I WAS CAPABLE OF**. Freshman year



—well, you could say I had a slow start. I just didn't have much drive. I had never been pushed before.

Then I applied to be an **ORIENTATION LEADER**.

I didn't get it because I had a low GPA. I was bummed. During the summer, I went home. I did

nothing. Played video games. I realized I was getting nowhere in life. So

**WHEN I CAME BACK, I TOOK 19 CREDITS**. I made the Dean's List. I

started applying for jobs and getting them. I realized that I needed to step up. I know my mother loves me, but she can't support me in the future.

**IT WAS UP TO ME."**

**MORE ON LEVI AND CHI ALPHA EPSILON:**

[www.newpaltz.edu/admissions/viewbook](http://www.newpaltz.edu/admissions/viewbook)  
[www.newpaltz.edu/admissions/viewbook/levi](http://www.newpaltz.edu/admissions/viewbook/levi)

**INFORMATION ON RESIDENT ASSISTANTS:**

[www.newpaltz.edu/reslife/leadership/faq.html](http://www.newpaltz.edu/reslife/leadership/faq.html)

**LEVI'S RECENT CLASSES****Fall 2010**

Art Criticism  
 Managerial Accounting  
 Statistics for Business and Economics I  
 Marketing

**Spring 2011**

Human Biology  
 Introduction to Africa  
 Statistics for Business and Economics II  
 Operations Management  
 Human Resource Management  
 Masterworks of Western Music

**"THE PREFERRED BUSINESS SCHOOL OF THE HUDSON VALLEY."**

This is a testament we've earned, with an exceptional faculty and commitment to student-centered learning inside and outside the classroom. Our program prepares students to compete in an ever-changing business environment, involving them in a wide range of disciplines. All our classrooms are high-tech wireless environments, and we even have our own stock market trading room. Our proximity to New York City provides unique opportunities; a full-time career counselor helps students with internships and job opportunities, while advisors guide our program to ensure our students are marketable.

17



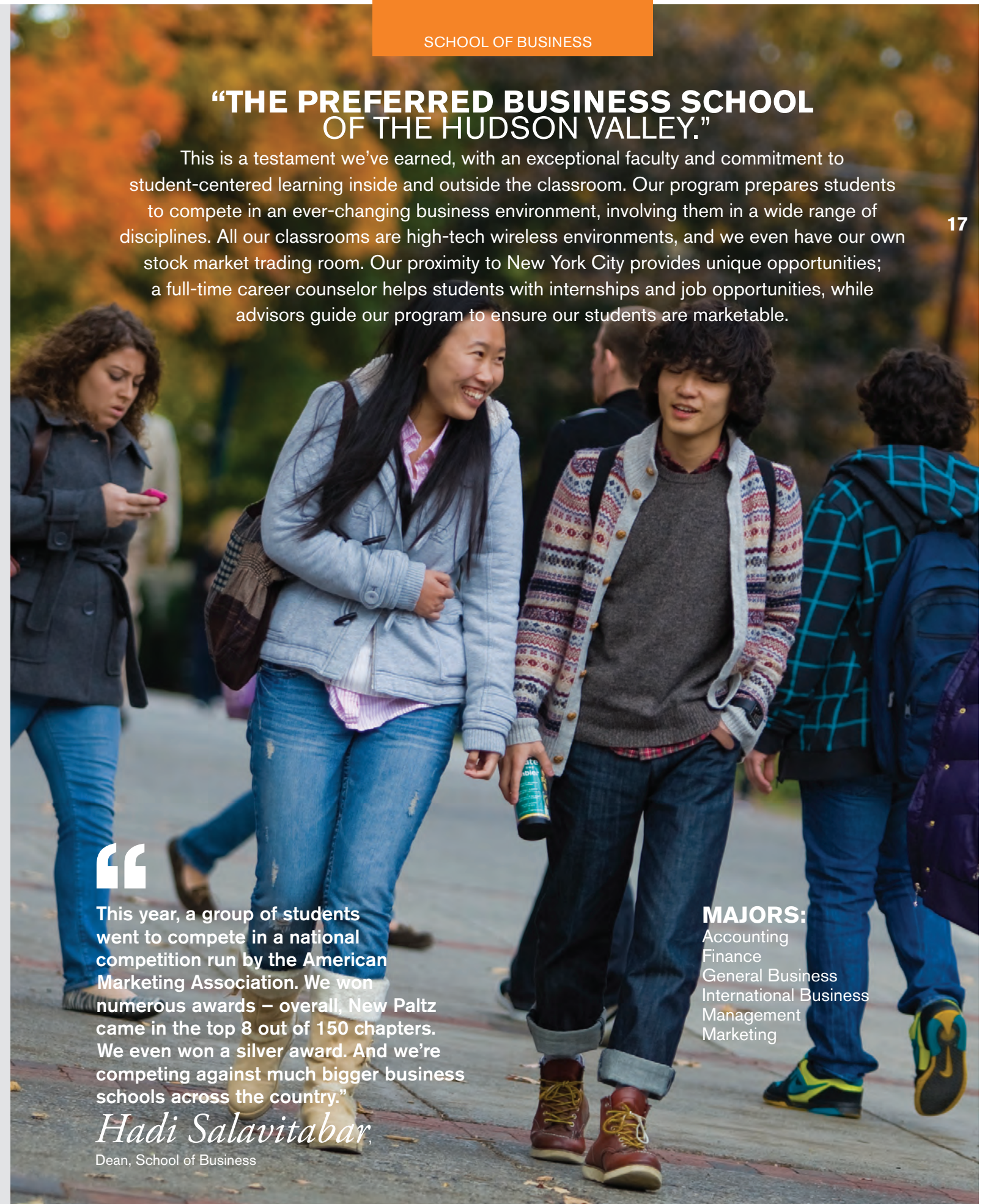
This year, a group of students went to compete in a national competition run by the American Marketing Association. We won numerous awards – overall, New Paltz came in the top 8 out of 150 chapters. We even won a silver award. And we're competing against much bigger business schools across the country."

*Hadi Salavitar*

Dean, School of Business

**MAJORS:**

Accounting  
 Finance  
 General Business  
 International Business  
 Management  
 Marketing







*My Degree?*  
*Education*

*My Education?*  
*Having the tools and confidence to identify issues, and critically think about how to improve society.*

*Dean Engle '13*  
*Future Educator, Democratic Advocate and Record Label Founder*



Top, left to right: As one of the first “faces and voices” of New Paltz, Dean works in the College’s Welcome Center located in the lobby of Haggerty Administration Building; Dean at the music festival in downtown New Paltz which he organized as part of his record label, Responsible Records; Dean in the Student Union.

“I want to empower young people through education. I’m very **PASSIONATE** about addressing our nation’s inequalities. It starts with examining my own prejudices and New Paltz is the perfect place for this personal **GROWTH**. It’s an open-minded community. My professors **CHALLENGED** biased assumptions that I didn’t realize I held. I’ve had discussions ranging from how to create a stronger sense of **DEMOCRACY** to the construction of gender. It’s made me a better human being.”

B. CASSETTE CASE COVER

“A sampling of music from my record label, Responsible Records, ('Responsible records on conscientious cassettes.').”



F. BUTTON

“This is a button that I wore at a student protest in Albany over budget cuts to the SUNY system.”



See pages 8-9 for key and full-color images.

J. UKULELE

“I’ve really only just started playing the ukulele a few years ago. It’s such a great instrument to play!”





*Dean Engle '13**Ukulele player and former resident of Scudder Hall*

# "Last summer

a friend and I were talking about how there are lots of **GREAT MUSICAL ARTISTS, STUDENTS** in New Paltz. But there was no central place to find out what's going on—where the shows were. There was no record label. So **WE THOUGHT WE'D START IT OURSELVES**. We asked a lot of the musicians who we liked a lot to join our label. No one hesitated—even though they wouldn't get any money. So we started putting out music on the Internet, free. Then we made tapes so there would be something physical. So far, **WE HAVE 10 RELEASES**. We held a music festival this past spring. It was held outside of Rhino Records on Church Street."

**MORE ON DEAN AND ALBANY PROTESTS:**

[www.newpaltz.edu/admissions/viewbook](http://www.newpaltz.edu/admissions/viewbook)  
[www.newpaltz.edu/admissions/viewbook/dean](http://www.newpaltz.edu/admissions/viewbook/dean)

**RESPONSIBLE RECORDS:**

[www.responsiblerecords.tumblr.com](http://www.responsiblerecords.tumblr.com)

**DEAN'S RECENT CLASSES****Fall 2010**

Social and Philosophical  
 Foundations of Education  
 English Literature 2  
 American Literature 1  
 Fiction into Film

**Spring 2011**

Developing Adolescence  
 Introduction to Literacy for Diverse Learners  
 Contemporary Literature from 1945  
 Young Adult Literature  
 Physical Geography  
 Foundations/Secondary Education Seminar, English

## LONG A CORNERSTONE

of the New Paltz tradition of academic excellence, the School of Education is committed to the preparation of skilled and dedicated teachers. Today, the School of Education continues its legacy of innovation and excellence and is in the forefront of preparing teachers who are committed to becoming caring, critical, and reflective professionals responsive to the needs of a diverse society.

21



Our School of Education is a highly field-based program, which is unique. Our students get a lot of experience working with children prior to their student teaching experience. Field work is closely aligned with our courses to connect theory with practice. We're also engaging students with innovative technologies—smart boards, audience response systems—so students know how to use the newest tools."

*Karen Bell*

Interim Dean, School of Education

**MAJORS:**

Early Childhood/Childhood  
 Education Dual Certificate  
 Program (Birth-Grade 2 and  
 Grades 1-6)  
 Adolescence (Secondary)  
 Education (Grades 7-12):  
 Biology  
 Chemistry  
 Earth Science  
 English  
 French  
 Mathematics  
 Physics  
 Social Studies  
 Spanish



# My Degree?

Fine Arts, Metal

# My Education?

Realizing that I don't have to be such a perfectionist. I can work to my full capacity without overstressing.

# Kali Ventresca '11

Metals Student, Vice President and Future Business Owner

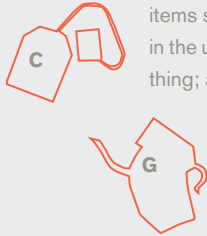


Top, left to right: As a Teaching Assistant, Kali addresses a question from one of the students in the Introduction to Metals class held in the Fine Arts Building (for images of the Fine Arts Building and more information on other Fine & Performing Arts facilities, go to [www.newpaltz.edu/fpa/facilities.html](http://www.newpaltz.edu/fpa/facilities.html)); A henna tattoo on Kali's hand; an example of some of Kali's work she designed in the highly-acclaimed New Paltz Metals program ([www.newpaltz.edu/metal/news.html](http://www.newpaltz.edu/metal/news.html)).

“This fall I became the Vice President of the Student Art Alliance. This student-run club **ORGANIZES** the art lecture series every semester, hosts several day trips to art museums per semester, and supports students financially who have **BIG DREAMS** and little funds. I'm also a Teaching Assistant for an intro art class. My artwork was displayed in the Haggerty Administrative Building as part of a **METAL WORK** show, curated by an MFA metals student and Myra Mimlitsch-Gray, the Art Department Chair. I was one of only two undergraduate students chosen for the display.”

## C. PURPLE TEABAG

“Denis Doherty, the head of the creative writing program, once advised me, ‘cultivate your sense of wonder.’ In collecting items such as the teabag, I am reminded that there is beauty in the uniqueness and individuality of every moment and every thing; all we have to do is find it.”



## E. SKETCHBOOK

“A sample of some of the rough sketches that I jot down when inspiration hits!”



## G. GREEN TEAPOT, 2010

“This piece was created as the final project in my Forming class taught by John Cogswell. The assignment was to create a mini teapot with character. The body of the teapot is hollow constructed in copper and the spout and handle are copper spiculus. The door and roof are made of silver.”

See pages 8-9 for key and full-color images.



*Kali Ventresca '11**Blogger, waitress and former resident of an off-campus apartment*

# "I'm involved

in a variety of **ACTIVITIES** here at New Paltz. I've joined a local women's softball league and love to use the school gym facilities. I'm a **CONTRIBUTOR** to 'Well-Being with Meaning,' a wellness blog promoted by The Little Rebellion, the Journalism Department's **ONLINE** news publication. I currently hold a job waitressing at a downtown establishment. I also help an elderly woman twice a week with household chores and grocery shopping. I **DESIGNED** and helped in the production of T-shirts for the National Eating Disorder Awareness Week here on campus. **I GUESS YOU CAN SAY I DON'T SLEEP!"**

**MORE ON KALI AND WORKING AS A TEACHER ASSISTANT:**

[www.newpaltz.edu/admissions/viewbook](http://www.newpaltz.edu/admissions/viewbook)  
[www.newpaltz.edu/admissions/viewbook/kali](http://www.newpaltz.edu/admissions/viewbook/kali)

**THE STUDENT ART ALLIANCE:**

[www.newpaltz.edu/fpa/lectureseries.html](http://www.newpaltz.edu/fpa/lectureseries.html)

**KALI'S RECENT CLASSES****Fall 2010**

Metal Forming  
 Contemporary Ideas in Metal  
 Fieldwork in Art  
 Human Biology  
 Short Story  
 Digital Diasporas

**Spring 2011**

Art of the Later Twentieth Century  
 Digital Video  
 Senior Studio in Metal I  
 BFA Seminar  
 Child Psychology and Development

**RENOWNED FOR ITS PROFESSIONAL**

orientation and high quality, our nationally accredited School of Fine and Performing Arts focuses on the preparation of students for a wide variety of careers in the arts through developing their skills as creative and performing artists. In addition to working with a faculty actively involved in professional disciplines, students have a wide range of facilities and resources on- and off-campus available to support and enrich their studies..

25

# “

The School of Fine and Performing Arts is an unusual and excellent blend of liberal arts and practical experience. You'll develop intellectually and as an artist, a grounding that will last an entire career. It's that balance—theoretical, historical, practical. This year we started a New Play Reading Festival in spring and fall. We read new plays in front of an audience. It adds a whole new dimension to our department that's exciting.”

*Paul Kassel,*

Associate Professor, Theatre Arts

**MAJORS:**

Art:

Ceramics  
 Graphic Design  
 Metal  
 Painting  
 Photography  
 Printmaking  
 Sculpture  
 Visual Arts  
 Art (Visual Arts) Education (K-12):  
 Art History  
 Music  
 Theatre



## My Degree?

Engineering

## My Education?

Discovering that if I set my priorities and goals, it all works. Everything falls into place.

## Doodnath (Fred) Ramdhanie '14

Future Electrical Engineer and Aspiring New Paltz Solar Car Team Member



Top, left to right: Doodnath plays a game of pool with Levi in the new, environmentally-friendly Atrium; ([www.newpaltz.edu/green/facilities.html](http://www.newpaltz.edu/green/facilities.html)); Doodnath and a friend take in the view on the Walkway Over the Hudson, a popular Hudson Valley tourist destination and the world's longest pedestrian bridge ([www.walkway.org/dynamic.php?id=faqs](http://www.walkway.org/dynamic.php?id=faqs)); members of the Solar Car Racing Team position their solar car for a test drive ([www.newpaltz.edu/green/solarcar.html](http://www.newpaltz.edu/green/solarcar.html) and [www.newpaltz.edu/solarcar/](http://www.newpaltz.edu/solarcar/)).

“

Growing up, I used to go with my friend's dad to renovate apartments he owned. I was always **FASCINATED** when he would climb a ladder, unscrew the ceiling light to test the electricity or cut and join wires. I don't know why, but ever since then, I've wanted to become an electrical engineer. I'm only a freshman, but I've already **DECLARED** my major. I know the degree I want is a long process—a five-year program. So I thought I'd get an **EARLY START**. Get it going as soon as possible.”

### D. DRUM SET



“I have been playing the drums since I was in sixth grade and it is something I love to do. I like playing the drums because it is a way for me to forget about life and zone-out into the music. It's sort of my escape.”

### N. POEM

“This poem was a gift from my mother. When she gave it to me, she made me promise her to make the best of college and not to do anything she wouldn't approve of. I keep the poem on my desk because it is a constant reminder of my mother and the promise I made to her.”





## Doodnath (Fred) Ramdhanie '14

Handball player and former resident of Deyo Hall

# "My advice

to entering freshmen is that when you arrive, there's a whole new sense of **FREEDOM**. The trick is to learn how to **SET PRIORITIES**. After a short while, I learned how to make time for my studies and leisure, without interfering with my grades. Why did I choose New Paltz? Because **IT'S CLOSE TO HOME**—

only about 1.5 hours away. Close enough to go back, far enough to be away. **IT'S DIFFERENT HERE**. You walk into a deli, everyone says 'hi.' It only takes fifteen minutes to get around to classes. You don't need a car. Everything you need is in town."



#### MORE ON FRED AND THE WALKWAY OVER THE HUDSON:

[www.newpaltz.edu/admissions/viewbook](http://www.newpaltz.edu/admissions/viewbook)  
[www.newpaltz.edu/admissions/viewbook/fred](http://www.newpaltz.edu/admissions/viewbook/fred)



#### THE SCHOOL OF SCIENCE & ENGINEERING:

[www.newpaltz.edu/sse](http://www.newpaltz.edu/sse)

#### FRED'S RECENT CLASSES

##### Fall 2010

Ecological Anthropology  
 Insects and Human Society  
 Ed Underrep College Studies  
 Composition I  
 Critical Thinking  
 College Algebra

##### Spring 2011

Introduction to the Visual Arts  
 Introduction to Africa  
 Composition II  
 College Algebra B  
 History of Jazz

## REAL WORLD LEARNING EXPERIENCE

combined with a solid foundation in the liberal arts enable our students to grow intellectually and meet the challenges of these continually evolving fields. In the Sciences and Engineering, new knowledge must be applied, new problems solved. Our strong ties with business and industry, coupled with opportunities for research, internships and cooperative education, provide New Paltz students unparalleled experiences.



In the sciences at New Paltz, the professors try to avoid memorization of material, and encourage a deeper understanding of how science is done. There's a pre-med track, and a Bachelors of Arts track that requires a science major with a minor in something of their choice. No other department at New Paltz requires a minor in a different subject matter. But this way, students can get a good grounding in science and go in any direction."

*Maureen Mauro*

Biology Professor

#### MAJORS:

Biology  
 Chemistry  
 Computer Engineering  
 Computer Science  
 Electrical Engineering  
 Environmental Geochemical Science  
 Mathematics  
 Physics

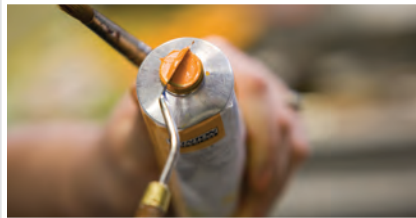
#### Companion Programs:

Seven-Year Medical Program  
 Seven-Year Optometry Program

#### Pre-Professional Advising:

Pre-Health Sciences (Medicine, Dentistry, Veterinary)

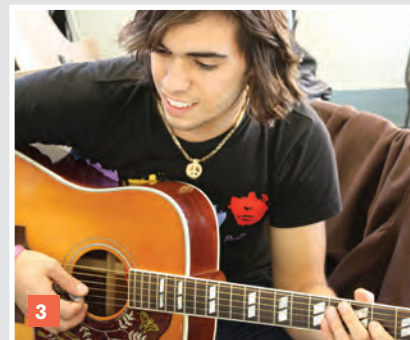




▲ “New Paltz is a great college town. When I drive down the hill to Main Street and see the mountain in the background, I think, ‘this is why people come to New Paltz.’ **IT’S BEAUTIFUL.** I’ve met so many students over the years, the decades. They come in as freshmen. By the time they’re seniors, they’re friends.”

*Marilyn Golgoski,*

Manny’s Art Store, Second-generation owner, supplying aspiring artists for forty-nine years



▲ “Our faculty have been cited for excellence in teaching, receiving SUNY Chancellor’s Award for Teaching and recognized as SUNY Distinguished Faculty. **EDUCATING IS THEIR FOCUS,** and they’re supported with an exceptional 16-1 student-faculty ratio.”

*L. David Eaton,*

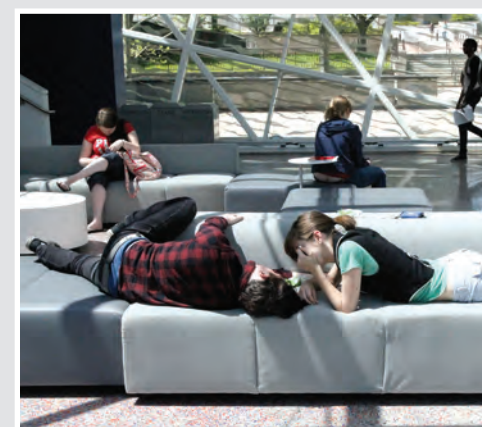
Vice President for Enrollment Management



► “The best kept secret of campus life? It’s got to be the Atrium. It opened last year. Students call it ‘the living room of the campus.’ It’s a place to go to read, eat, see friends, talk about classes—just **CONNECT** with each other. it’s a major addition to our living, learning environment.”

*Ray Schwartz,*

Associate Vice President, Student Affairs  
> [http://www.newpaltz.edu/webcam/atrium\\_opening.html](http://www.newpaltz.edu/webcam/atrium_opening.html)



▲ “I’m a junior and I work in the campus bookstore. A lot of parents and students come into the bookstore when they’re visiting. I have lots of **OPPORTUNITIES** to put parents at ease. They’re more nervous than the students! I tell them there are plenty of places for them to eat. We’ll take care of them. No worries.”

*Julian Burnet ’12*

> [www.thebookstoreatnewpaltz.com](http://www.thebookstoreatnewpaltz.com)



1. SUNY New Paltz has three theatre venues for students and the community—McKenna Theatre, a fully-equipped state-of-the-art proscenium arch theatre seating 366; Parker Theatre a three-quarter or modified thrust stage seating 212; and the Black Box, a small experimental theatre studio with flexible playing space and seating. 2. Farm markets are a common occurrence on campus and provides students with an opportunity to sample local organic goods. 3. Student musicians can be seen, and heard, around campus on a welcoming step, bench or lawn. 4. Members of the New Paltz Baseball team show their colors, and spirit, at a home event. 5. Dave Barry, one of the recent speakers for SUNY New Paltz’s Distinguished Speaker’s Series, dons a SUNY New Paltz sweater. 6. Metal students (as well as other students) can be found every semester selling their art to help support student groups and activities. 7. Billy Name, an American photographer, filmmaker and lighting designer most-often identified with Andy Warhol, gives a lecture on-campus as part of the student-led Student Art Alliance. 8. The Bachelor of Fine Arts and Master of Fine Art Thesis shows in the Samuel Dorsky Museum of Art are a highlight for students and the campus community and draw large crowds. 9. New Paltz has been

an active participant in international education for more than 100 years. Today, 600 international students from 50 different countries are enrolled in undergraduate, graduate and non-degree programs. Forty-five distinct Study Abroad experiences are available for New Paltz students, spanning the globe from Europe to Asia to South America to the Middle East ([www.newpaltz.edu/admissions/international.html](http://www.newpaltz.edu/admissions/international.html)). 10. The annual New Paltz Regatta on the Walkill River is a popular event for the entire community and draws many New Paltz students. 11. Students have many food options available to them on campus ([www.newpaltz.edu/vtour/dining.html](http://www.newpaltz.edu/vtour/dining.html)) with recent additions to the food court in the new Student Union. 12. Moving In Day is annual ritual at New Paltz. Faculty, staff and even the College president pitch-in to welcome students to the New Paltz community by physically helping them move into their new residence hall rooms and by acting as a resource to students and parents alike, facilitating the transition to campus living. 13. The Sojourner Truth Library fosters learning and supports scholarship at SUNY New Paltz by providing an extensive array of information resources and services, including 500,000 books & bound periodicals, 800+ print journal subscriptions and numerous electronic resources.



## My Degree?

### English and History



"I had to work nights to pay my way through school. From 11pm to 7am, I'd work at a tollbooth on the New York State Thruway, and then I'd go to campus, sleep an hour or two, and be a student. As a student of English and History, I learned how to engage in issues with greater understanding. I deeply appreciated the school. **IT WAS STRONG ACADEMICALLY THEN, AND IT'S EVEN STRONGER NOW.** It's progressive, challenging, and the teachers are exceptional. Attending New Paltz was a very powerful and positive experience, and it helped me to grow as an individual."

*Maurice Hinchey '68, '72 (grad)*

United States Congressman

## My Education?

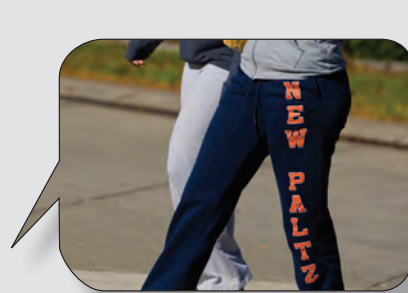
### New Paltz grew me— thoughtfully and effectively.

CONGRESSMAN  
ACTOR AUTHOR

"One of the most rewarding experiences at New Paltz was when my professor, Dr. Alfred Marks, wrote on one of my essays, 'I look forward to seeing you become a fine writer.' Twenty years later, I read my 12th children's book at an event at the College. I was so proud, and I could see he was, too. **MY DEGREE?** I switched from art and did a contract major because I was afraid I'd never make a living as an artist. Never say never! **MY EDUCATION?** Being encouraged to explore my passions—and to see the wisdom of 'to thine own self be true.'"

*Iza Trapani, '81*

Currently finishing her 22nd published children's book



"I recall when Kate Millett came to speak. She said that for a woman to be free, she had to learn to be alone and enjoy it. I've experienced this in my life. Leadership is not about being one of the group. It requires being alone. **IF YOU'RE OUT THERE LEADING, YOU'RE OUT THERE.** For women, it's harder—we want to make people happy and build consensus. But leadership is about standing on your own. It's a struggle to do it, but it's important. I've shared this life lesson with my daughter—who also graduated from New Paltz!"

*Dr. Jane Delgado, Ph.D, M.S., '73*

President and CEO, National Alliance for Hispanic Health One of seven "Women to Watch" according to *The Ladies Home Journal*



"New Paltz gave me the tools to solve problems and achieve at a high level. In my senior year, I was up for the lead in a play. The director was also considering me for a different role, but I wanted the lead. It was Arthur Miller's 'A View from The Bridge.' I was unsure. Should I accept the supporting role or not? I was torn, so I took a long meditative walk in the rain. I wound up at the house of one of my theater professors, Joe Paparone, and asked him for advice. He told me to follow my instincts, follow my heart. Stay strong and stick to my guns. I didn't accept the supporting role and they gave me the lead. I took that experience with me. **MY DEGREE** from New Paltz? BA in Theatre Arts. **MY EDUCATION?** Well, in life you don't always have the opportunity to stick to your guns. But once in a while, you should. If you don't get what you want, at least you know that you were true to your convictions."

*Michael Badalucco, '76*

Emmy-winning actor, most known for his role on "The Practice"



DIRECTOR CEO  
WINE EDUCATOR

**"EVERYTHING I DID AT NEW PALTZ ENDED UP IN MY LIFE.** I'm certified to teach nursery through 6th grade. I took my degree and my passion and made a life. Instead of elementary school, I've taught 20,000 adults about wine. I can get in front of an audience of third graders or CEOs of companies. I took English courses at New Paltz. My first published book is the largest selling book on wine. Because of New Paltz, I was able to create a business, become successful, travel the globe, which ironically enabled me to stay right here—it's one of the most beautiful places in the world."

*Kevin Zraly, '74*

One of America's foremost wine educators, recipient of the Lifetime Achievement Award from The James Beard Foundation, member of Board of Trustees of the Culinary Institute of America

"At New Paltz, the emphasis was on teaching. You can connect with professors. Afterwards, I went on to Harvard for graduate school and while I was there, I taught some sections. I told the students, 'I bet your parents paying for this didn't expect you to be taught by me!' At New Paltz, I had full access to professors. Honest to God, they took an interest in me. If you put thought and care into a paper, it was recognized and your talents were fostered. **MY DEGREE?** Sociology. **MY EDUCATION?** Realizing that if you go into situations with an openness to new experiences, you can exit with knowledge you didn't even know you were looking for."

*Michele DiPalo, '77*

Director of Medical Policy Operations of Blue Cross/Blue Shield, Massachusetts



“

The students are nice, polite. I've been here twelve years and the students haven't really changed. **THEY EAT EVERYTHING.** There's a cafe right by the library. You got to keep the kids going, keep their strength up when they're studying.”

—Dee Draper, Campus Food Service

## In Brief.

**Character :** Very selective, 4-year, co-ed, residential; regional university; state assisted; liberal arts/professional studies.

**Location:** New Paltz, NY, a small, historic village (population of 11,300) in New York State's Hudson Valley region, mid-way between Albany and New York City.

**Campus:** 257 acres and 47 buildings.

**Enrollment:** 6,413 Undergraduates (5,980 full-time and 433 part-time), and 1,311 graduate students (522 full-time and 789 part-time).

**Academic Structure:** College of Liberal Arts and Sciences; School of Business; School of Science and Engineering; School of Education; School of Fine and Performing Arts; The Graduate School of New Paltz.

**Faculty:** 325 full-time and 325 part-time with 86% of faculty holding a Ph.D. or terminal degree.

**Average Class Size:** 75% or classes are less than 30 students; 92% of classes are less than 40 students.

**Diversity:** 26% underrepresented students.

**Female/Male Ratio:** 65% female, 35% male.

**Residence Life:** Thirteen halls.



### MORE ON APPLYING:

[www.newpaltz.edu/admissions](http://www.newpaltz.edu/admissions)

# Applying:

## FRESHMAN ADMISSION

SUNY New Paltz considers the following factors in the admission decision:

- The quality and strength of the high school academic program for 9th, 10th, and 11th grades.
- The results of either the SAT (Critical Reading and Mathematics sections) or ACT (Composite score).
- The quality of the personal essay submitted.
- One academic teacher or guidance counselor letter of recommendation.

Every applicants should take a college preparatory program containing the following five core subject areas:

- 4 units of English
- 4 units of social studies/history
- 3-4 units of college prep mathematics (minimally Algebra I, Geometry, Algebra II/Trigonometry)
- 3-4 units of science (minimum of 2 units laboratory science)
- 2-4 units of a language other than English

The above core courses need to be at the Regents level (NYS), college preparatory level, or higher.

## APPLICATION

Apply one of two ways (please use only one application):

- Use the SUNY Application ([www.suny.edu/student/apply](http://www.suny.edu/student/apply))

OR

- Use the Common Application ([www.commonapp.org](http://www.commonapp.org))

The application fee for either application is \$50 (non-refundable).

## Freshman\*

(Fall enrollment only)

- Early Action: November 15
- 7-Year Medical Program: January 15
- 7-Year Optometry Program: January 15
- Regular Freshman: April 1
- EOP<sup>1</sup> Freshman: April 1

\* The College reserves the right to change these deadlines without prior notice.

<sup>1</sup> Educational Opportunity Program



## TRANSFER ADMISSION

**Who does New Paltz consider a transfer student?**

Any student who has taken course work at an accredited college after high school graduation will be considered a transfer student.

## What is needed to be considered?

- Less than 45 completed credits: 2.75 GPA plus high school transcript and SAT or ACT scores.
- More than 45 complete credits: 2.75 GPA in all previous college work.

## Is applying directly to a major required?

- If less than 45 completed credits, apply either to a major or as “undeclared.”
- If 45 or more completed credits, applicants must apply directly to a major; undeclared is not a choice.



- Secondary school transcript. Submit items B, C, D directly to: International Admission Center for International Programs van den Berg Annex 250 State University of New Paltz 1 Hawk Drive New Paltz, NY USA 12561-2443 Fax: (845) 257.3608

## Minimum requirements for consideration for admission as an international undergraduate:

- Secondary School Program of Study: should be comparable to American “college preparatory” program.
- Secondary School Average: will vary according to the grading system used in particular school and/or country.
- TOEFL Score: minimum needed for consideration: 550 (paper); 213 (computer).
- The SAT Critical Reading score may be substituted for the TOEFL score. The minimum SAT Critical Reading score required for consideration is 500.

## APPLICATION DEADLINES:

### Fall Semester Enrollment:\*

- Application and all supporting documents: April 1
- Application and all supporting documents: November 1

\* The College reserves the right to change these deadlines without prior notice.



## MORE ON FINANCIAL AID:

[www.newpaltz.edu/financialaid](http://www.newpaltz.edu/financialaid)



“

The weirdest packages we get? **THE LIVE ANIMALS.** Probably for the biology department. Crickets. Once, a turtle—a big one. Hermit crabs. Gosh, I hope they're for the biology department!”

—Cherie Hunt, Mail Services Coordinator

## UNDERGRADUATE ADMISSION: VERY SELECTIVE.

### Freshman

Mean high school average: 92.0

Mean SAT (critical reading and mathematics combined): 1190.

Mean ACT (composite): 26

### Transfer

Mean GPA: 3.4

### Annual Expenses:\*

#### NYS:

Tuition..... \$4,970  
Fees..... \$1,188  
Room/Board ..... \$9,950  
Total..... \$16,108

### Out of State and International:

Tuition..... \$13,380  
Fees..... \$1,188  
Room/Board ..... \$9,950  
Total..... \$24,518

\*Expenses as of May, 2011. Subject to change without notice.



# Find Yourself Here

## VISIT NEW PALTZ

A campus visit includes a 30-minute Admission Advisor presentation and a 90-minute walking tour with a Student Ambassador. Your tour will include: a selection of academic buildings; the library; the Athletic and Wellness Center; campus dining facilities; and a residence hall and student room.



### MORE ON VISITING:

[www.newpaltz.edu/visitus](http://www.newpaltz.edu/visitus)  
[www.newpaltz.edu/vtour](http://www.newpaltz.edu/vtour) (virtual tour)

## CONTACT

Office of Undergraduate Admission  
100 Hawk Drive  
New Paltz, New York 12561-2499  
845.257.3200  
[admissions@newpaltz.edu](mailto:admissions@newpaltz.edu)  
[www.newpaltz.edu](http://www.newpaltz.edu)

A copy of the State University of New York at New Paltz campus crime statistics as reported annually to the U.S. Department of Education will be provided upon request by SUNY New Paltz University Police. Please direct all such requests to SUNY New Paltz University Police at 845.257.3340, 845.257.3802 or [www.newpaltz.edu/police/securityact.html](http://www.newpaltz.edu/police/securityact.html). Information can also be obtained from the U.S. Department of Education web site at [www.ed.gov](http://www.ed.gov).

This publication was produced by the Office of Communication and Marketing/Design Services at the State University of New York at New Paltz; ©2011 SUNY New Paltz and has been edited for accuracy at the time of publication. Information contained herein is subject to change.

Principal photography by Michael Gold, Steve Jordan, FJ Gaylor, and Jeff Lesperance. Map illustration by mapformation.

This publication was printed by Benchmark Printing, Inc., an FSC-certified printer located in Schenectady, NY. It is printed on Mohawk Options paper with 100% post-consumer recycled fiber and manufactured with Green-e certified windpower.  
[www.fsc.org](http://www.fsc.org)



### MAP KEY:

- 1 Lenape Hall
- 2 Esopus Hall
- 3 Student Health & Counseling Center

- 4 South Classroom Building
- 5 Bevier Hall
- 6 Hasbrouck Dining Hall
- 7 LeFevre Hall
- 8 Crispell Hall
- 9 Dubois Hall
- 10 Deyo Hall

- 11 Gage Hall
- 12 Scudder Hall
- 13 Bliss Hall
- 14 Athletic & Wellness Ctr.
- 15 Elting Gym
- 16 Parker Theatre
- 17 Capen Hall
- 18 Student Union
- 19 Hopper Undergraduate Admission & Alumni Center

- 20 Atrium
- 21 Haggerty Administration Building
- 22 College Theatre
- 23 Samuel Dorsky Museum of Art
- 24 Smiley art Building
- 25 Fine Arts Building
- 26 College Terrace
- 27 Sojourner Truth Library
- 28 Lecture Center

- 29 Coykendall Science Building
- 30 Faculty Office Building
- 31 Bouton Hall
- 32 Graduate Admissions/Regional Education Hall
- 33 Resnick Engineering Building
- 34 Wooster Science Building
- 35 Humanities Classroom Building

- 36 Jacobson Faculty Tower
- 37 van den Berg Hall
- 38 Old Main
- 39 Old Library
- 40 Shango Hall
- 41 College Hall
- 42 Center for International Programs
- 43 Hamner House

1

2

3

14

15

26

11

13

37

27

16

25

28

35

38

12

29

36

4

17

22

23

24

10

30

34

39

9

18

31

33

5

6

20

21

8

19

32

24

43

41

40

“A friend of mine goes to a large college and found it hard to meet people there. People are **FRIENDLY** at New Paltz. It's a smaller campus. I know people in every hall. You get to know everybody.”  
—Ricardo Hernandez '14





Office of Undergraduate Admission  
100 Hawk Drive  
New Paltz, NY 12561-2499  
845.257.3200  
admissions@newpaltz.edu

www.newpaltz.edu  
www.facebook.com/newpaltz  
www.twitter.com/npadmissions  
www.twitter.com/newpaltz

TECHNOLOGY IN THE ART ROOM OPTICAL MINERALOGY OPERATIONS MANAGEMENT

EXISTENTIALISM NEW MEDIA MODERN CHINA

BEGIN

RAISE YOUR HANDWRITE A POEM SPEAK UP

SIT IN THE FRONT ROW PLAY AN INSTRUMENT LEARN A NEW LANGUAGE VOLUNTEER

