
The logo of the University of Campinas is a large, stylized circular emblem. It features a central white circle surrounded by a ring of grey segments, resembling a sunburst or a gear. The text "University of Campinas" is written in a bold, blue, sans-serif font across the center of the emblem. To the right of the emblem, there is a small red circle. At the bottom center of the emblem, there is a small red semi-circle.

University of Campinas



Profile

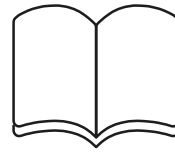
- **Established in October 5, 1966**
- **Public university of the State of São Paulo**
- **Focus on high-quality teaching**
- **Top-end research**
- **Services to society**
- **Bridges between academy and industry**
- **Innovation and entrepreneurship**



The University in Numbers

24 Schools & Institutes

02 Technical High Schools



36 Technical High Schools courses

66 Undergraduate

152 Graduate (MSc; PhD)

03 Hospitals
863 Beds



The University in Numbers



40,362

Students

3,764 high school
(technical)

19,581 undergraduate

17,017 graduate (MSc; PhD)

99%

PhD

90% full time

1,910

Faculty members

Rankings



1st in Latin American

28th position on the list of the top 100 universities from BRICS. (2017)

2nd position on the list of the Latin American's top 10 universities.

12th position on the list of BRICS universities.



3rd position on Ranking of Brazilian Universities

12th Ranking by internationalization

Research



Top Brazilian university in number of published articles per faculty member

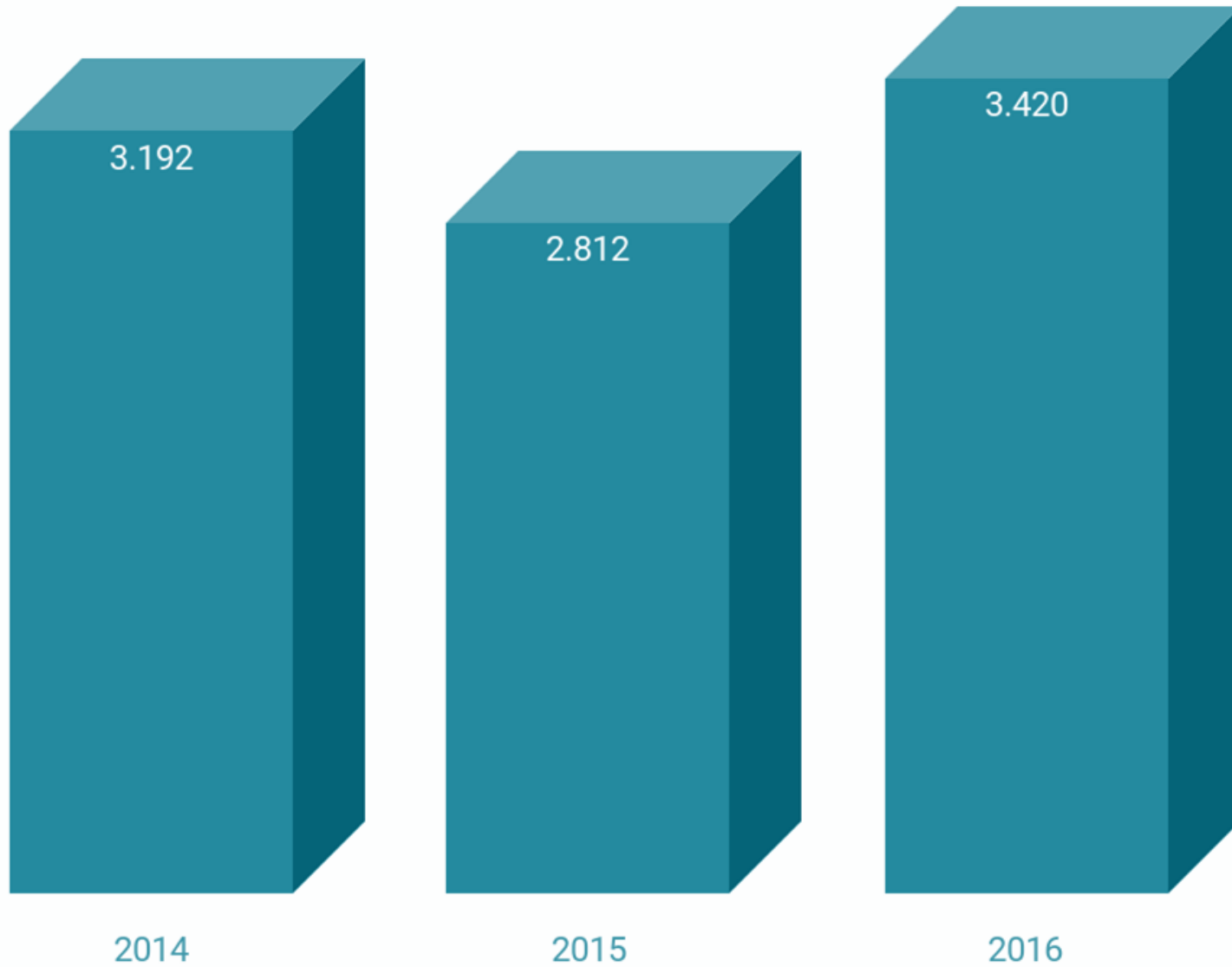
≈ 8% of scientific articles indexed in Brazil includes an author or co-author of Campinas, equivalent to 1.75 publications per faculty member of the university

Responsible for ~15% of the Brazil's Academic Research

46% of its graduate courses were ranked by CAPES/MEC as excellence courses (against Brazil's average of 12%)

Top Brazilian university in number of patents/licensed patents.

Indexed Articles



Capes Assessment

Triennial - scale 1 – 7



University	Numbers	Average score
Unicamp	72	5.32
UFMG	70	5.30
USP	230	5.22

Top Programs

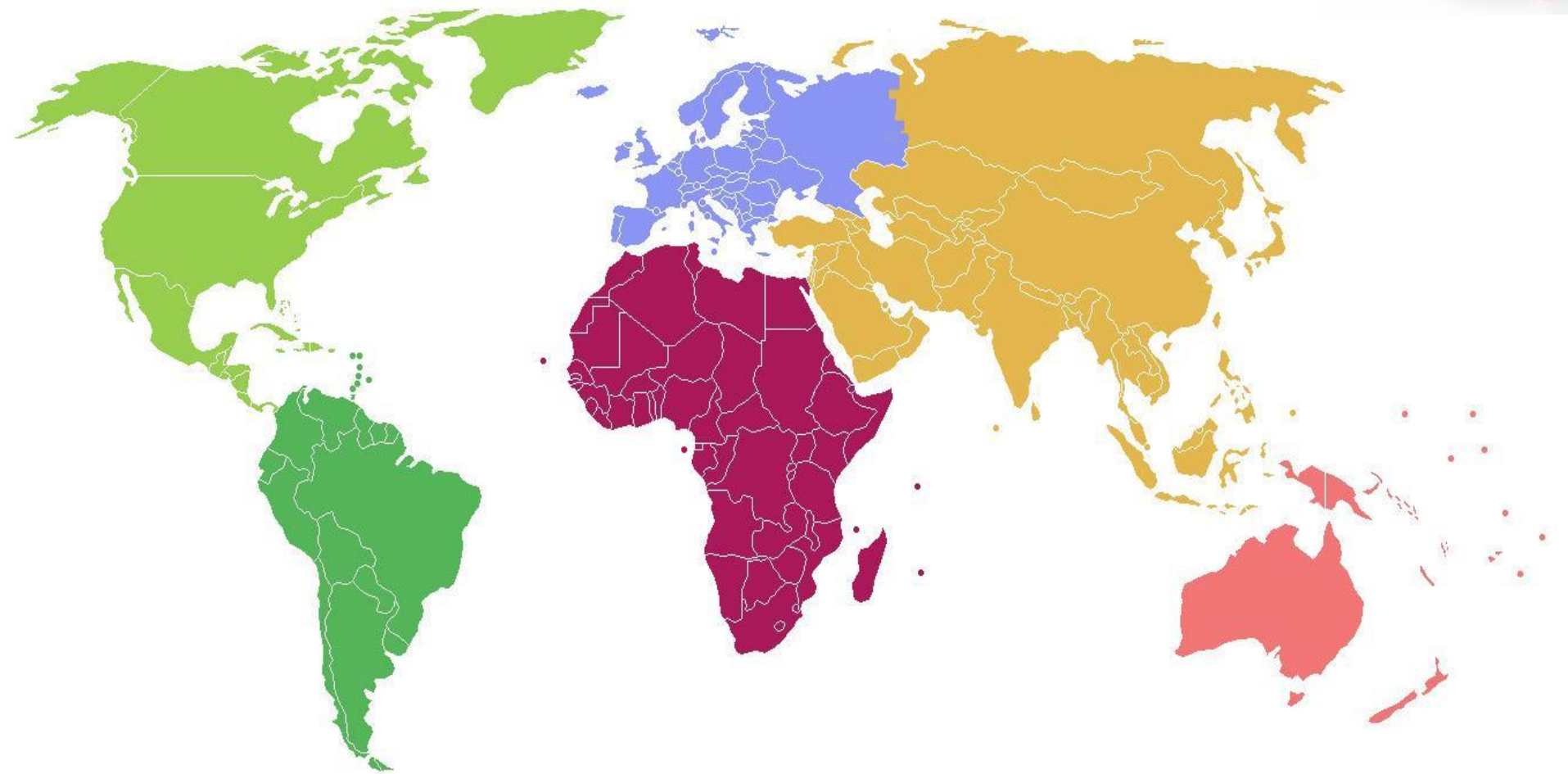
Grade 7

Chemistry
Computer science
Dentistry
Ecology
Electrical engineering
Food engineering
Food science
Genetics and molecular biology
History
Literary Theory
Linguistics
Mathematics
Mechanical engineering
Obstetrics and Gynecology
Physics
Physiopathology

Grade 6

Applied linguistics
Applied mathematics
Chemical engineering
Demography
Dental clinic
Dental materials
Economic science
Food technology
Geosciences
Molecular and functional biology
Oral pathology
Philosophy
Science and technology policy
Social anthropology
Sociology
Structural and cell biology
Vegetal biology

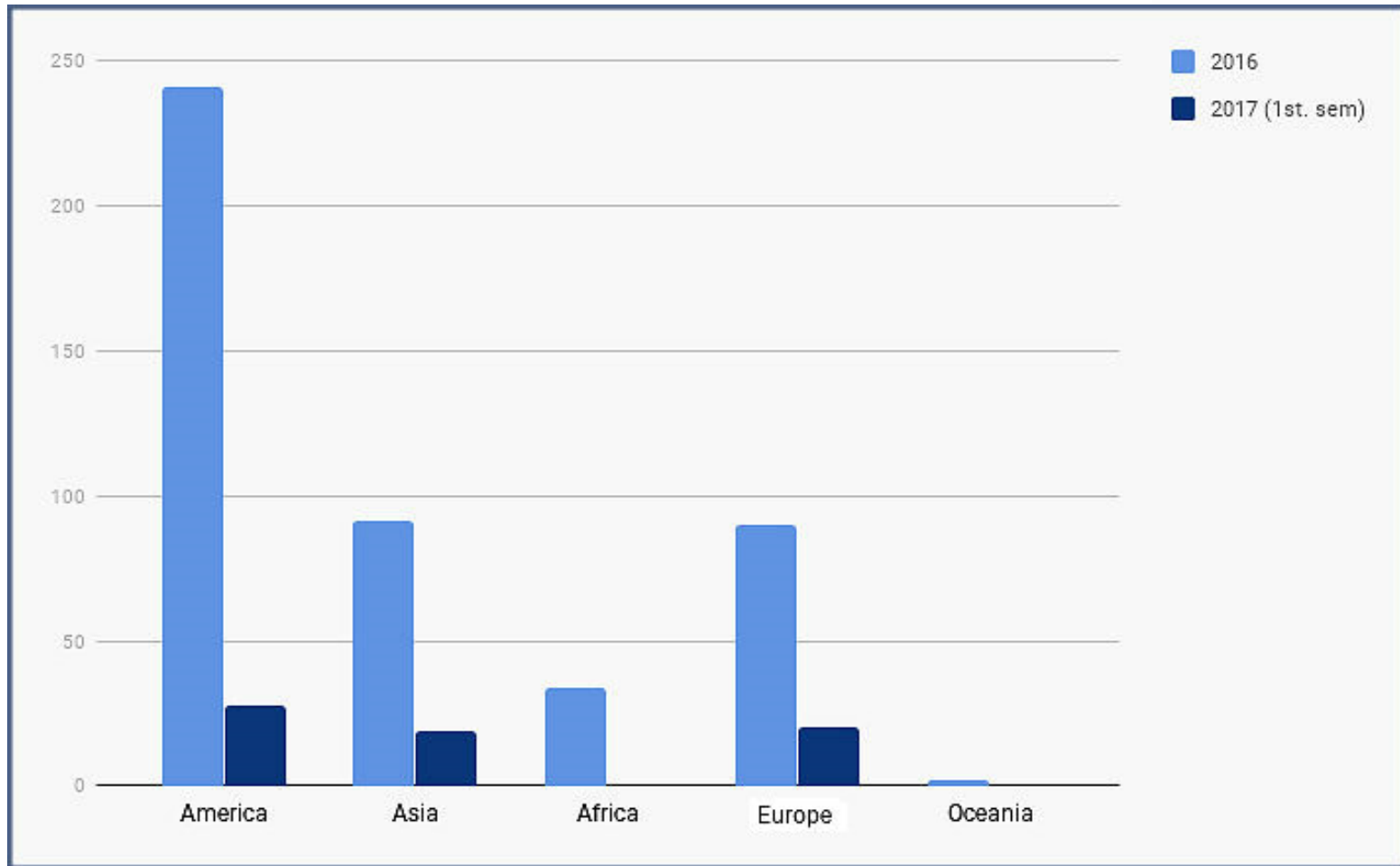
International Cooperation



Around 650 agreements

Incoming Students 2016/2017

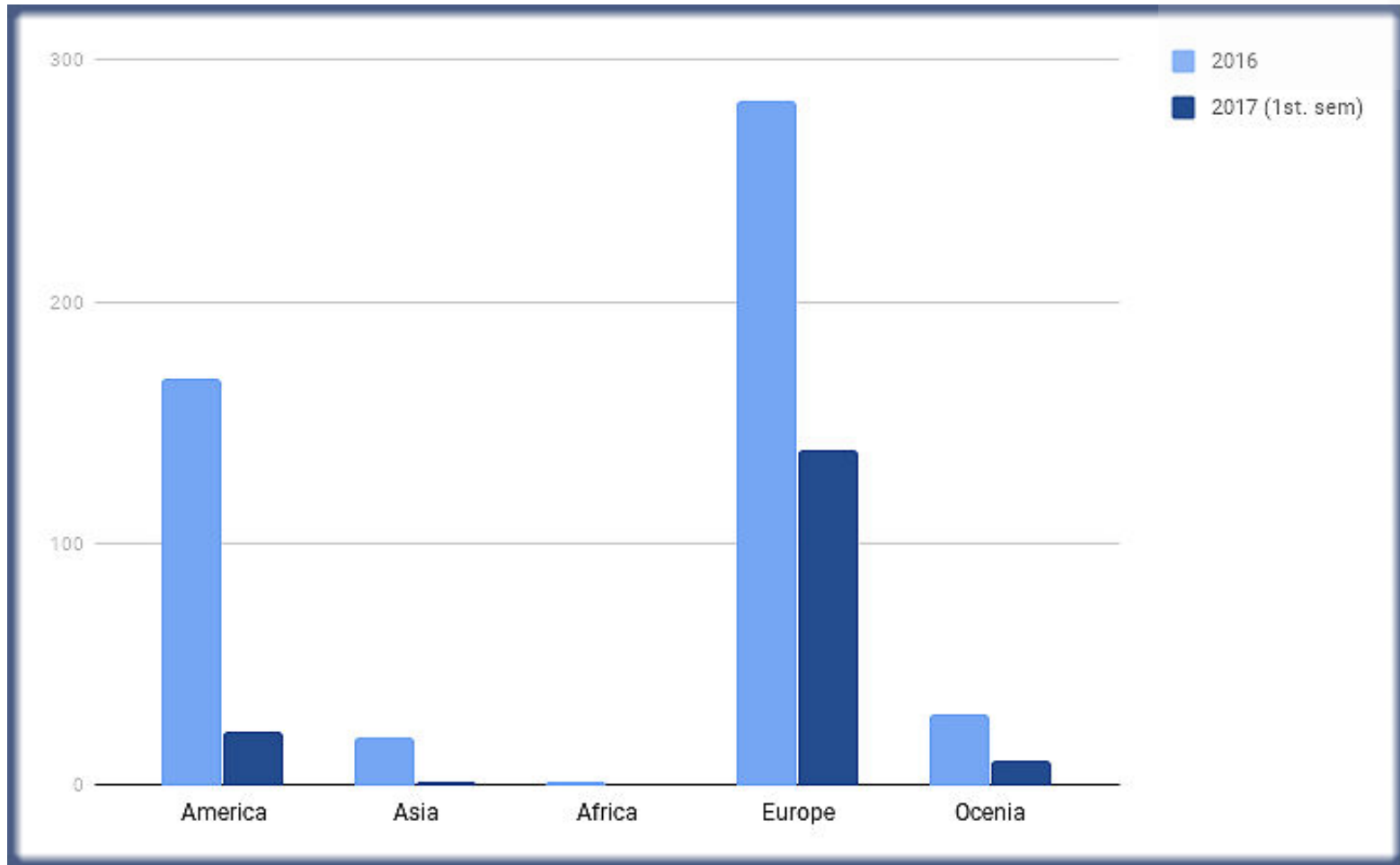
Undergraduate



Total Foreigners: 466

Outgoing Students 2016/2017

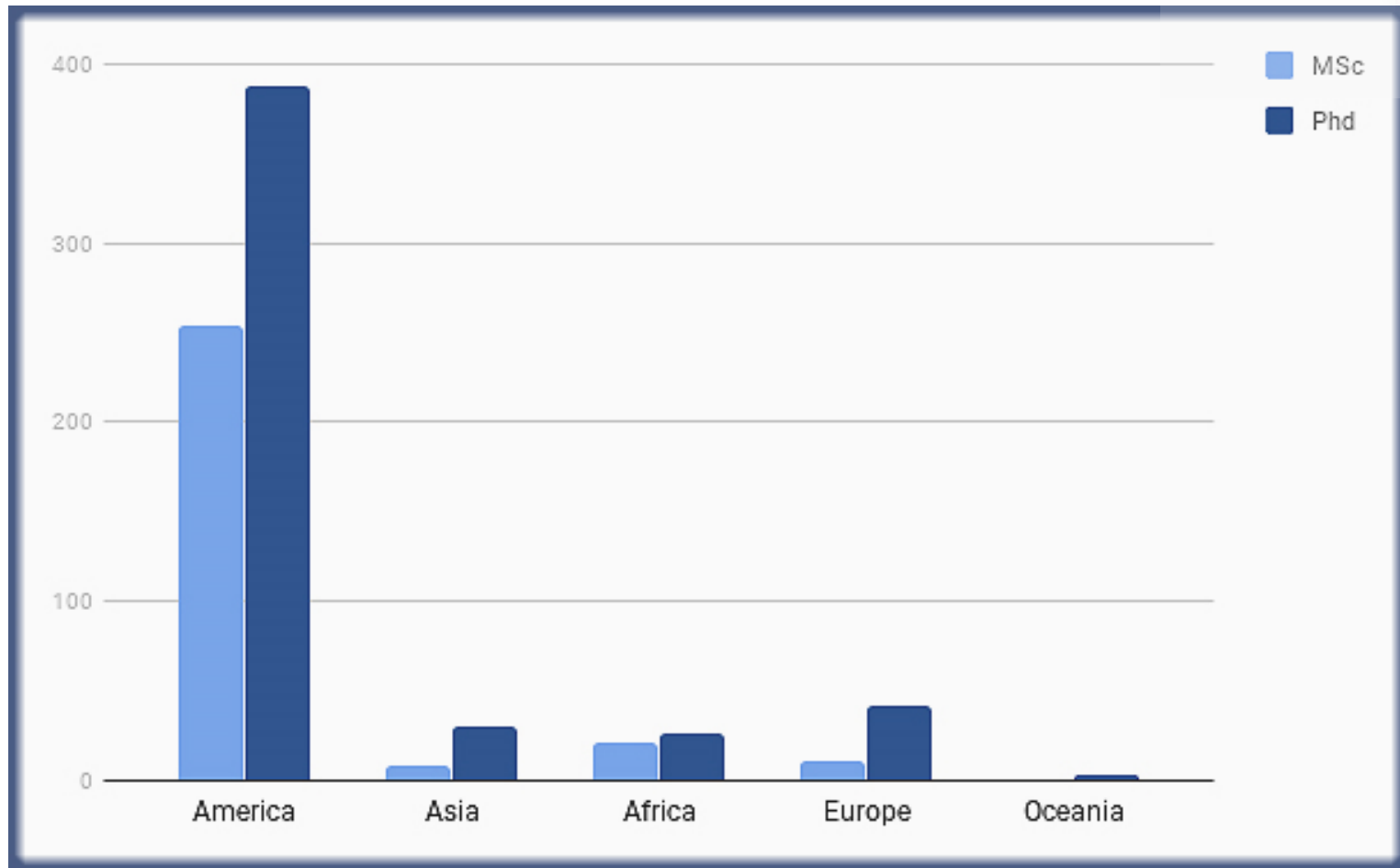
Undergraduate



Total Students: 663

Incoming students 2016/2017

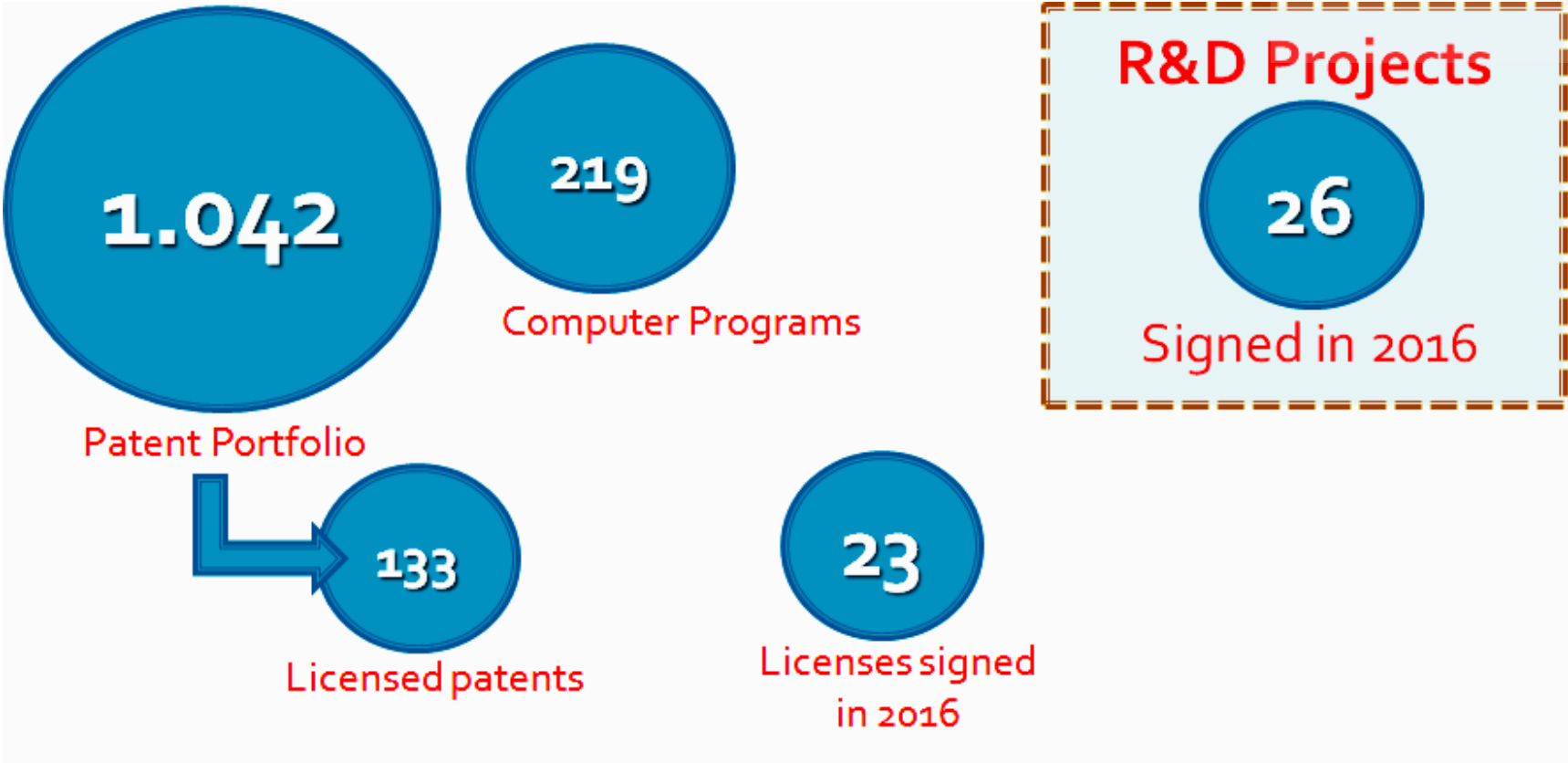
MSc/PhD



Total MSc: 302
Total PhD: 484

Innovation Initiatives

Unicamp Innovation Agency





Active companies: 434

Jobs: 21.995

Revenues: over R\$ 3 bi

EXTECAMP Extension school
Continuing education



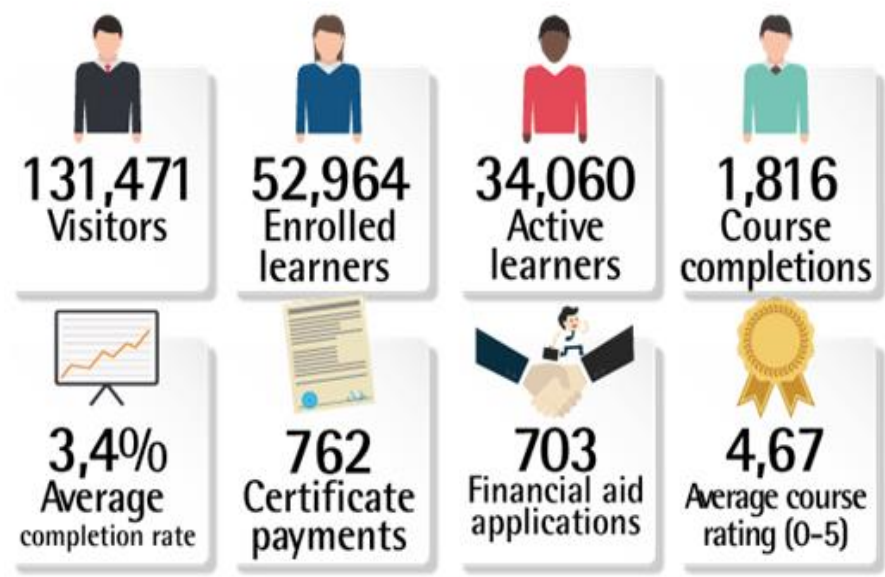
- Specialization and Extension Courses (2016)
 - Courses with different characteristics and lengths.
 - Several areas of knowledge
 - 1.510 Courses (Including Specializations and short-term courses)
 - 11.356 Students enrolled

Extecamp EAD

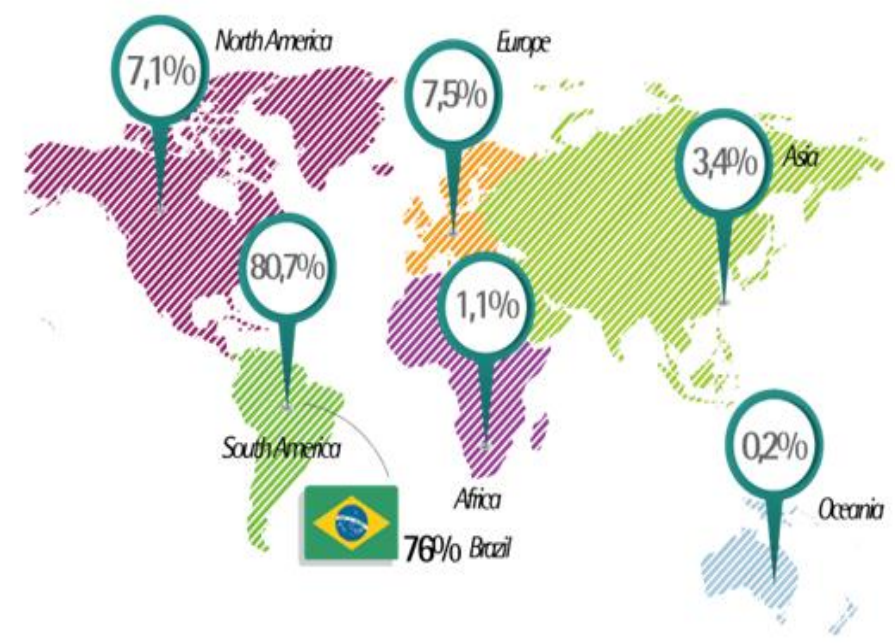
Learning Management System



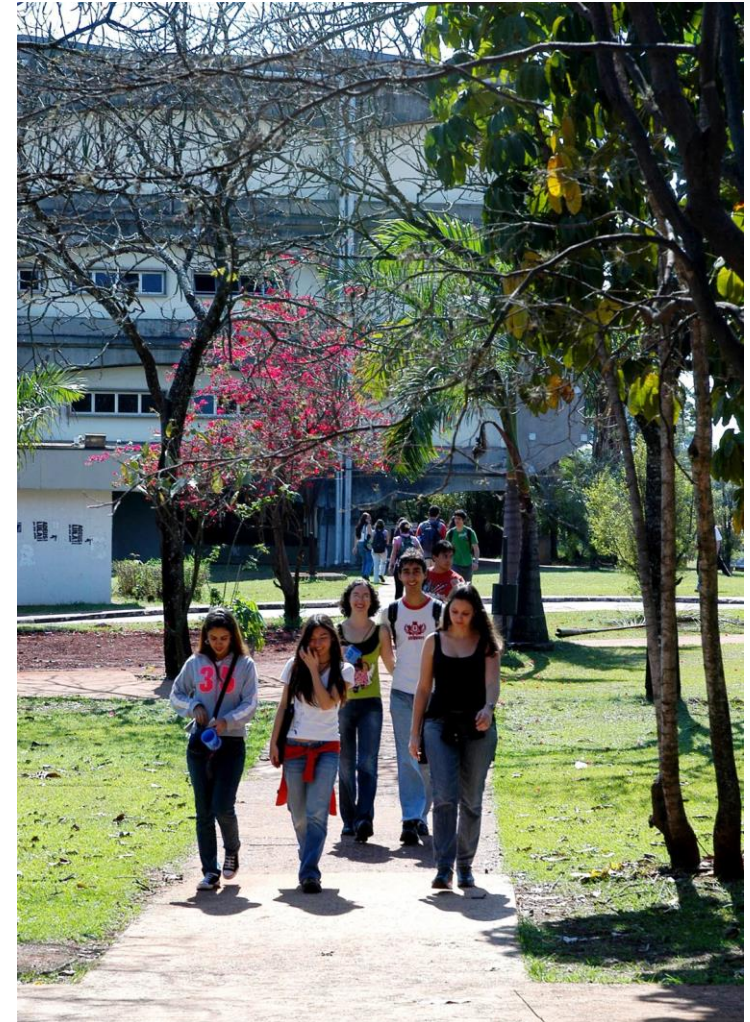
UNICAMP: partnership with Coursera



Updated on March 3rd , 2017



Unicamp



Key features



A dynamic institutional environment, sensitive and responsive to societal demands

Balance between recruiting the best students and promoting social inclusion of students coming from the public school system combined with affirmative actions

Early immersion of undergraduate students in research projects (scientific initiation starting in the 2nd/3rd years)

Contact

DERI – International Relations Office



UNICAMP – The University of Campinas

www.unicamp.br



www.internationaloffice.unicamp.br



internationaloffice@reitoria.unicamp.br

Phone: +55 19 3521 4718



<https://www.facebook.com/internationaloffice.unicamp/>