



MAPUA  
UNIVERSITY



# STUDENT EXCHANGE PROGRAM

A.Y. 2024 - 2025



# ACADEMIC INFORMATION



## LANGUAGE OF INSTRUCTION

English is the primary language used in all courses and lectures offered by Mapúa University



## ACADEMIC CALENDAR

1st & 2nd Quarters (Fall Semester)  
August 2024 to January 2025

3rd & 4th Quarters (Spring Semester)  
February to July 2025



## PROGRAMS & COURSES OFFERED TO EXCHANGE STUDENTS

- Architecture and Design
- Business and Management
- Communication and Media Studies
- Engineering and Sciences
- Health Sciences
- Information Technology
- Physical Education

For the complete list of academic programs open to exchange students, please visit: <https://www.mapua.edu.ph/pages/academics/undergraduate>

# ACCREDITATIONS & RECOGNITIONS



**World  
University  
Rankings**

2023 TOP 1501+



**WORLD  
UNIVERSITY  
RANKINGS**

QS Asia University Rankings 2023

**#551-600**

## PROGRAMS

Computer Science - Rank 801+  
Engineering - Rank 1001+  
Physical Sciences - Rank 1001+

Southeast Asia - Rank 88



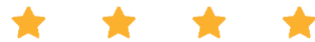
**World University  
Rankings 2023**

**Asia**

2023 TOP 601+



**STARS™**  
RATING SYSTEM



**THE IMPACT  
RANKINGS**  
2023 TOP 1000



**ISO  
Certifications**

ISO 9001:2015  
Quality Management Systems

ISO 14001:2015  
Environmental Management  
Systems





## Centers of Excellence

- Chemical Engineering
- Civil Engineering
- Computer Engineering
- Electrical Engineering
- Electronics Engineering
- Information Technology Studies
- Mechanical Engineering
- Sanitary Engineering



Computing  
Accreditation  
Commission

- Computer Science
- Information Systems
- Information Technology



## Center of Development

- Industrial Engineering



Engineering  
Accreditation  
Commission

- Biological Engineering
- Chemical Engineering
- Civil Engineering
- Computer Engineering
- Electrical Engineering
- Electronics Engineering
- Environmental and Sanitary Engineering
- Industrial Engineering
- Manufacturing Engineering
- Materials Science and Engineering
- Mechanical Engineering

ACCREDITATIONS  
& RECOGNITIONS



# REQUIREMENTS

## VISA REQUIREMENTS & TRAVEL INFORMATION

For information regarding visa application process and requirements and Philippine travel, please click on the following links:

VISA APPLICATION

<https://www.visa.gov.ph>

PHILIPPINE TRAVEL ADVISORY

<https://bit.ly/PhilippineTravelInformation>



### NOMINATION

Interested students must be nominated by their International Office for our Exchange Program. Nominations may be sent through email at [international.programs@mapua.edu.ph](mailto:international.programs@mapua.edu.ph).



### APPLICATION

Once the nominations of the students are accepted by Mapúa University, students shall fill out the Application Form for International Programs - Inbound and submit the required documents.



### DEADLINE

Fall Intake (August to January)  
Deadline for applications:  
**May 10, 2024**

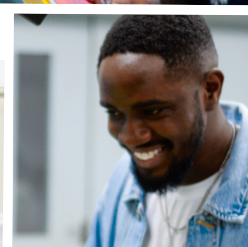
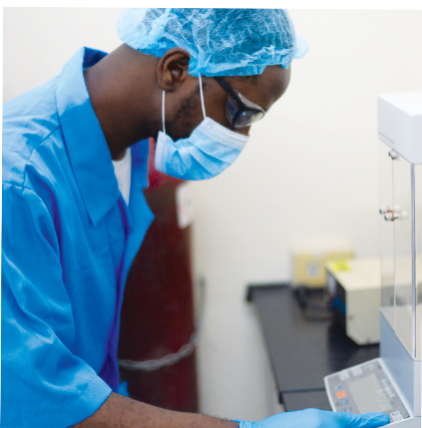
Spring Intake (February to July)  
Deadline for applications:  
**November 8, 2024**

## ADMISSION REQUIREMENTS

- Application Form for International Programs - Inbound. Download at <https://bit.ly/MapuaIntlProgramsApplication> or scan the QR code
- Bio page of passport
- Certificate of Enrollment
- Transcript of Records



REQUIREMENTS



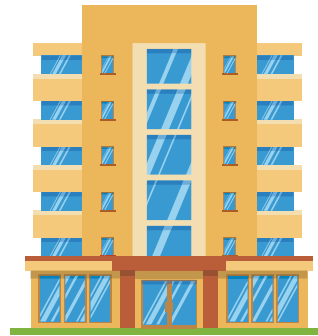


# STUDENT LIFE



## Airport Pick-up

A representative from Mapúa University's Office of International Career and Exchange Programs will pick up the students at the Ninoy Aquino International Airport upon arrival in Manila, Philippines.



## Accommodation

Mapúa University does not have on-campus accommodation for international students. However, it has a list of accredited dormitories within the city and can assist international students in choosing their accommodation.

The Office of International Career and Exchange Programs will send the list of accredited dormitories to the home university through email.







## Student Organizations and Activities

Mapúa University has its International Students Organization, where all international students enrolled at the university get to meet, bond, and explore Mapúan and Philippine cultures together.

Apart from that, Mapúa's student buddies, a group of Filipino Mapúans, are available to assist international students during their stay in the country.

International students are welcome to join Mapúa University's various student organizations and participate in all institutional activities, such as the Foundation Week, University Week, Student Organizations Week, etc.



## COST

### Tuition Fee

For the Student Exchange Program, no academic costs are charged to the exchange students from partner universities.

### Accommodation Rates

PHP 6,000 – PHP 20,000 per month depending on the type of accommodation (e.g., dormitory or condominium)

### Food and Drinks

Meals inclusive of food and drinks at the University Cafeteria cost PHP 150.00 per meal

### Living Expenses

PHP 45,000.00/month

Includes: Transportation, groceries, and personal expenses.



STUDENT LIFE



**Mapúa University**  
**International Linkages, Relations, and**  
**Development Cooperation**

Ground Floor North Building  
Mapúa University  
658 Muralla Street, Intramuros,  
Manila, Philippines 1002  
Tel. No.: (+632)8247-5000 local 51241  
Email: [international.programs@mapua.edu.ph](mailto:international.programs@mapua.edu.ph)