



TILBURG UNIVERSITY

STUDY ABROAD & EXCHANGE FACT SHEET 2023-24

CONTACT

STUDY ABROAD & EXCHANGE TEAM

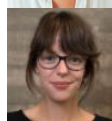


TEAM LEADER
MS. ANNA RATHERT

STUDY ABROAD & EXCHANGE COORDINATORS (IN- & OUTBOUND EXCHANGE)



MS. BIBI MULDER
Canada, Ireland, UK & USA, special programs QTEM & ISEP



MS. ELS BLAAUW
Currently on extended leave until Spring 2023



MS. MARA CORNELIS
Europe



MR. TEUN VAN VEGHEL
Europe



MS. RACHAEL VICKERMAN
Asia & the Middle East



MS. VERONIQUE HELLWIG
Latin America, Africa & Oceania

STUDY ABROAD & EXCHANGE OFFICERS (IN- & OUTBOUND EXCHANGE)



MS. HELEEN ZUIDEMA & MS. NAOMI VAN DER HEIJDEN

VISITING ADDRESS

Tilburg University – International Office
Intermezzo Building – Room I 612
Professor de Moorplein 521
5037 DR Tilburg
The Netherlands
☎ +31 (0)13 466 4477
✉ studyabroad@tilburguniversity.edu

POSTAL ADDRESS

Tilburg University
PO Box 90153
5000 LE Tilburg
The Netherlands

ONLINE CHANNELS

Website: 🌐 tilburguniversity.edu/exchange
Facebook: 🌐 Tilburg University – Study Abroad
Instagram: 🌐 @tilburguabroad

ERASMUS+ INSTITUTION CODE

NL TILBURG 01

OUR CAMPUS

GREEN SPACE & AN INTERNATIONAL COMMUNITY



ABOUT TILBURG UNIVERSITY

Tilburg University is a thriving university specializing in Social Sciences and Arts & Humanities. Social connection, academic excellence, and a strong campus feeling are at the heart of our education experience. Understanding and serving society is what drives us. Our green campus offers an attractive base for fostering an international community where students and teachers can inspire and challenge each other. Tilburg University consists of five different schools: Economics & Management, Law, Social and Behavioral Sciences, Humanities and Digital Sciences, and Theology. University College Tilburg provides the interdisciplinary Bachelor's program of Liberal Arts and Sciences. TIAS School of Business and Society is the business school of Tilburg University and Eindhoven University of Technology, offering post-graduate education.



According to the three most renowned university rankings (THE, ARWU, and QS), Tilburg University belongs to the best 2% of the world's 17,000 universities. tilburguniversity.edu/about/tilburg-university/rankings

ABOUT TILBURG

Large enough to find plenty to do, but still small enough to run into people you know, Tilburg is an idyllic, entrepreneurial and cultural city with world-class public institutions and a calendar packed with a variety of public events. It's a true university city, too: with a population of 30,000 students, 1 in 8 people in Tilburg is a student!

CAMPUS LIFE

With our green campus designed to be fast and easy to navigate, you will be able to stroll between the library and your lecture hall or your favorite café in no time. All university buildings are within walking distance from each other, and are set amongst landscaped gardens and open green spaces. Our campus is home to over 17,000 students.

Take a virtual campus tour at tilburguniversity.edu/campus-tour

Total student population in Tilburg:	approx. 30,000
Population of Tilburg:	approx. 2174,000
Distance to Amsterdam (by car):	110 km / 68 miles
Distance to Brussels (by car):	120 km / 75 miles
Distance to Paris (by car):	415 km / 257 miles
Distance to Berlin (by car):	680 km / 422 miles

For information about studying in the Netherlands:

youtube.com/studyinholland



INCLUSIVE MOBILITY

Students of all backgrounds are welcome at Tilburg University. A range of services are available for students who may require extra support. For more information, see: <https://inclusivemobility.eu/countries/nl/institutions/6878>

NOMINATION & APPLICATION

IMPORTANT DATES & REQUIREMENTS

A NOTE ON CORONAVIRUS MEASURES

There are currently few COVID-19 regulations in the Netherlands and on Tilburg University's campus. Nevertheless, we are continuously monitoring the local and global situation, including relevant measures and travel restrictions. Exchanges in the 2023-24 academic year will be organized accordingly. Official information on COVID-19 regulations can be found via the Dutch government's website: <https://www.government.nl/topics/coronavirus-covid-19>

NOMINATION DEADLINES

Fall 2023 and Full Year	1 May 2023
Spring 2024	1 October 2023

APPLICATION DEADLINES

Fall 2023 and Full Year	15 May 2023
Spring 2024	15 October 2023

REGISTRATION DAYS

Fall 2023	Mid/late August 2023 *
Spring 2024	Late January 2024 *

T.O.P WEEK (ORIENTATION PROGRAM)

Fall 2023	Late August 2023 *
Spring 2024	Late January 2024 *

START OF CLASSES

Fall 2023	Late August 2023 *
Spring 2024	Late January / early February 2024 *

EXAM PERIOD

Fall 2023	December 2023 / January 2024 (plus re-sits in January if necessary) *
Spring 2024	May / June 2024 (plus re-sits in July if necessary) *

RE-SIT EXAM PERIOD

Fall 2023	January & mid-June / July 2024 *
Spring 2024	Mid-June / July 2024

** Period and exact dates to be confirmed and are subject to change.*

BALANCE BETWEEN SEMESTERS

Due to the high number of incoming students in the fall semester (August – January) and, consequently, a high demand for student housing, we prefer an equal balance in nominations from our partners across both semesters.

CONTRACTS AND PARTNERSHIPS

For any queries regarding exchange contracts and partnerships with Tilburg University, please contact our International Relations department directly at internationalrelations@tilburguniversity.edu.

NOMINATION & APPLICATION PROCEDURE

[tilburguniversity.edu/education/exchange-programs/applicationprocedure](https://www.tilburguniversity.edu/education/exchange-programs/applicationprocedure)

Students should check with their home university whether Tilburg University is one of their exchange partners, and apply for an exchange through their home university. Partner universities are advised to note that from 2021, we will no longer accept nominations via email. Instead, partners should submit the details of their selected students via our new online nomination system. A link to the system and login details will be emailed to you closer to the nomination deadlines.

All nominated students will receive an email with the application instructions and practical information about the exchange program at Tilburg University a few weeks before the application deadline. Students should complete their application online. All required documents need to be uploaded through the online application system. We no longer require original documents. As part of their online application, students must upload:

1. Transcript of records **in English** (students who are in their Master studies must upload both their Bachelor and Master grade list)
2. Additional documents may apply for specific courses (e.g. motivation letter and/or essay). Please find more information in the 'courses for exchange students' section of this fact sheet (below)

ELIGIBILITY REQUIREMENTS

BACHELOR / UNDERGRADUATE EXCHANGE

1. Proficiency in English. We rely on our partner universities to nominate students who are proficient in English. Students with mainland Chinese nationality need to submit a TOEFL or IELTS certificate to obtain a visa. Students' English proficiency should meet the following level:
TOEFL: 550/213/80 (paper/computer/internet-based);
Academic IELTS 6.0 (at least 5.5 on individual parts);
Cambridge First, Advanced, or Proficiency;
Common European Framework level B2.
2. Successfully completed at least 1.5 years of education, but preferably two years of studies within in a relevant field of studies (economics, business, law, social & behavioral sciences, humanities, theology).

MASTER / GRADUATE EXCHANGE

1. Proficiency in English. We rely on our partner universities to nominate students who are proficient in English. Students with mainland Chinese nationality need to submit a TOEFL or IELTS certificate to obtain a visa. Students' English proficiency should meet the following level:
TOEFL: 600/250/100 (paper/computer/internet-based);
Academic IELTS 7;
Cambridge First, Advanced, or Proficiency;
Common European Framework level C1.
2. Successfully completed an undergraduate program in a relevant field of studies (economics, business, law, social & behavioral sciences, humanities, theology).

<https://www.tilburguniversity.edu/education/exchange-programs/language-requirements>

The requirement for students with Chinese nationality to submit an IELTS or TOEFL certificate applies only to students from mainland China (not Hong Kong, Macau or Taiwan). It applies to all mainland Chinese students, including those who are studying for their degree program outside of China.

COURSE INFORMATION

COURSES FOR EXCHANGE STUDENTS

tilburguniversity.edu/education/exchange-programs/courses

Tilburg University offers a wide variety of undergraduate and graduate level courses to exchange students. Our incoming exchange students are allowed to take courses from all schools, as long as they meet the prerequisites of the courses at the start of the semester. In some cases, other restrictions or selection criteria may apply (e.g. minimum grade average, motivation to take a course, etc.). These will be mentioned as “conditions apply” on the course webpage. We offer courses within the fields of:

Microeconomics	Macroeconomics	Econometrics
Finance	Accounting	Marketing
Information Management	Operations Research	Organization & Strategy
Organization Studies	Human Resource Studies	Psychology
Sociology	Theology	Public Administration
Culture Studies	Philosophy	Liberal Arts & Sciences (restricted)
Global Law (restricted)	Law	Communication & Information Sciences
Data Science	Cognitive Science & Artificial Intelligence	

LANGUAGE COURSES

tilburguniversity.edu/education/languages

Our on-campus Language Center offers courses to students who wish to improve their skills in Dutch, Chinese, English, French, Portuguese, Russian, German, Spanish or Italian. In addition, tools for self-study are offered to anyone who wishes to improve their language skills. Exchange students receive language vouchers (of 12 ECTS in total) with which they can register for a language course for free!

CERTIFICATE PROGRAMS FOR EXCHANGE STUDENTS

tilburguniversity.edu/education/exchange-programs/courses/certificate-programs

All fall semester exchange students are invited to participate in one of our Certificate Programs. These programs are designed for students who would like to specialize and gain a depth of understanding in a focused area of study. A certificate will only be awarded if the student successfully completes all courses from the program. The following certificated programs are available:

Accounting		Information Management		Marketing	
Finance	Organization & Strategy	Economics	Entrepreneurship		
Econometrics and Operations Research			International Business Administration		

LEARNING EXPECTATIONS



INSTRUCTION METHODS

A mix of (guest) lectures to a larger number of students and interactive seminars, workshops and tutorials with in-depth discussions in groups of between 10 and 40 students.

ASSESSMENT METHODS

Oral or written examinations (some courses have midterms as well), individual or group papers, essays, case studies, in-class presentations and other forms of coursework all count towards the final grade. At the end of each semester an examination period is scheduled.

COURSE LOAD

- Most courses are 6 ECTS (study load of 168 hours)
- A full time workload for one semester is 30 ECTS
- A regular workload for exchange students is 4 or 5 courses (24 – 30 ECTS)

GRADING SYSTEM

The Dutch grading system uses grades from 1 to 10. Grades with one decimal place can be issued. The lowest passing grade at Tilburg University is a 6.0. Any grade below 6.0 is a fail.

BACHELOR GRADES:

Grade	Description	% of students with same grade	% of students with same grade or higher
10.0	Excellent	1%	1%
9.5	Excellent	1%	2%
9.0	Excellent	4%	6%
8.5	Excellent	7%	12%
8.0	Very good	12%	25%
7.5	Very good	15%	40%
7.0	Good	18%	58%
6.5	Good	17%	75%
6.0	Sufficient	25%	100%

MASTER GRADES:

Grade	Description	% of students with same grade	% of students with same grade or higher
10.0	Excellent	0%	0%
9.5	Excellent	1%	1%
9.0	Excellent	4%	5%
8.5	Excellent	9%	14%
8.0	Very good	17%	31%
7.5	Very good	20%	52%
7.0	Good	20%	72%
6.5	Good	14%	86%
6.0	Sufficient	14%	100%

LIFE IN TILBURG

COST OF LIVING, HOUSING & SERVICES



COST OF LIVING

Living in Tilburg is relatively inexpensive compared to other Dutch university cities. The cost of living is approximately €825 per month. Below is a general overview of monthly costs for students. These estimated costs can vary from person to person and also depend on individual lifestyle.

MONTHLY LIVING COSTS (ESTIMATE)	
Accommodation	€360-400
Food	€300
Books and readers	€80
Health, liability, travel insurance	€45
<i>Total</i>	<i>€785-825</i>

A second-hand bicycle and lock will cost about €125. A university sports card costs €127,95 per semester or €164,95 for one year.

SERVICES AND FACILITIES

STUDY ABROAD & EXCHANGE TEAM

The Study Abroad & Exchange Team is the first point of contact for exchange students. We are here to help ensure students' exchange experience runs as smoothly as possible at all points of the process.

VISA APPLICATION

[🔗 tilburguniversity.edu/education/welcome-new-student/immigration](https://www.tilburguniversity.edu/education/welcome-new-student/immigration)

Tilburg University's team of specialist Immigration Coordinators process visa applications for all incoming students who require a visa and/or residence permit to study in the Netherlands. They help you through every step of the process by dealing with your application on an individual basis, taking into account your personal situation.

Students who require a visa and/or residence permit must pay an immigration fee of €207 to begin their immigration process. The process will begin shortly after the exchange application deadline. Please note that students are required to show proof that they have the necessary funds to finance their stay in Tilburg. This is currently **€4800** for one-semester students (5 months) and **€9600** for full-year students (10 months). **From Fall 2023, students must transfer the full sum via a secure payment link before their visa/residence permit can be issued. Bank letters, letters from family members etc. will no longer be accepted.** The funds will later be reimbursed to the student once the immigration process is complete. Students who receive a scholarship are permitted to submit scholarship paperwork as proof of funds. Extra documentation or a transfer of funds will be required for any difference between the scholarship amount and the required funds.

HOUSING

[🔗 www.tilburguniversity.edu/education/welcome-new-student/accommodation](https://www.tilburguniversity.edu/education/welcome-new-student/accommodation)

Tilburg University does not offer on-campus accommodation. However, we are partnered with student housing organization WonenBreburg, which offers furnished accommodation to international students via [🔗 yourroomintilburg.com](https://www.yourroomintilburg.com). Most of the rooms are in the building on Professor Verbernelaan (popularly known as "Verbs"), on the edge of campus. There are also a small number of rooms available at the Goirkestraat facility for full-year exchange students. Unfortunately, rooms in the Talent Square building are not available for exchange students. The number of available rooms is limited, meaning that less than half of incoming exchange students will be able to reserve a room. Rooms are allocated on a first-come, first-served basis via registration in an online system.

The monthly rent for the 2023-24 academic year is around €375 per month. The rental contract for fall semester students runs from August to January (5 months) and for spring semester students from January to August (6.5 months). **All semester-**

long students must pay the rent for the entire semester at the time of registration. Full-year students must make two payments: one before their arrival for the first semester, and one halfway through the academic year for the second semester.

Please note that if students require a visa and/or residence permit and want to reserve a WonenBregburg room, they must be in a position to transfer the relevant (approximate) amount from the below list before their exchange begins:

- Fall semester students: **€6890** (immigration fee + one semester living costs + 5 months housing cost)
- Spring semester students: **€7450** (immigration fee + one semester living costs + 6.5 months housing cost)
- Full year students: **€11,700** (immigration fee + full year living costs + first semester housing cost)

Students who are not able to register for reserved accommodation need to find their own accommodation on the private market. It is their own responsibility to arrange this and our Housing Office (studenthousing@tilburguniversity.edu) can assist where needed. We also offer our incoming students the opportunity to sub-let a Tilburg University student's room whilst that student is on exchange abroad. This is coordinated internally via a search portal. Availability of sub-lets varies per semester and students must arrange the conditions of the sub-let between themselves.

There is an extremely high demand for housing on the private market, especially in fall semesters, meaning that sourcing accommodation can be difficult. Students with a flexible choice regarding in which semester to study abroad are advised to come to Tilburg in the spring semester to avoid a potentially stressful search for accommodation. **Tilburg University advises students not to travel to Tilburg or to make other financial commitments if they have not secured housing.**

INSURANCE

tilburguniversity.edu/education/welcome-new-student/insurances

All students are required by law to be covered by appropriate health insurance for their full period of stay in the Netherlands. We strongly recommend students to also have appropriate liability and travel insurance. It is students' own responsibility to arrange this. Tilburg University recommends Aon+ Student Insurance: aonstudentinsurance.com/students/en/

ORIENTATION: REGISTRATION DAYS, PROGRAM INTRODUCTION & T.O.P WEEK

tilburguniversity.edu/education/welcome-new-student/introduction-activities/topweek

tilburguniversity.edu/education/welcome-new-student/introduction-activities/registration-days

Tilburg University organizes a Registration Day to offer a warm welcome to Tilburg. On this day, we provide students with all kinds of information and amenities that will contribute to a relaxed and organized start in Tilburg. The Study Abroad & Exchange team runs a mandatory Program Introduction (PI) for all incoming exchange students during the optional Tilburg Orientation Program (TOP) week. During the PI, we welcome all exchange students. Students will get to meet the Study Abroad & Exchange Team and their mentor, and receive more information about, for example, how to make use of our digital student environment as well as our academic and cultural environment. We recommend participation in the TOP week to get the full introduction to student life in Tilburg!

UNIVERSITY LIBRARY

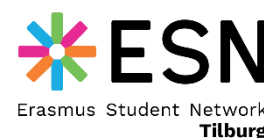
tilburguniversity.edu/about/university-library

Tilburg University's library is one of the most modern university libraries in Europe, and a popular place to study individually or in groups. It is home to an impressive collection of e-books, e-journals. In addition, its collection of over 800,000 books, journals, illustrations, early works and manuscripts provide a treasure of scholarly information.

MENTOR SYSTEM

esntilburg.nl

ESN Tilburg (formerly I*ESN), our international student organization, organizes a mentor system for incoming international students. ESN also organizes regular activities for all international students and internationally-minded Dutch students at Tilburg University. ESN runs a dynamic international hub in Tilburg city center.



STUDENT LIFE

FACILITIES & EVENTS

Tilburg University offers a rich student life with over 40 student organizations, excellent sports facilities and a large number of pubs, bars, cinemas, museums and concert halls. Combined with the numerous events organized by and within the (student) community such as festivals, exhibitions and conferences, this ensures that Tilburg has something to offer for everyone.

DESTINATION: EXCHANGE EVENT

We invite our incoming exchange students to be part of our Destination: Exchange Event, which takes place each semester. The event is aimed at Tilburg University's outgoing students who are about to embark on their semester abroad. It offers a chance for our outgoing students to meet incoming students currently in Tilburg, to share tips and inspiration about studying abroad. For our incoming students, this contact with local students aids their settling in and integration into Tilburg and for our outgoing students, they can receive valuable advice from students who are already in the exchange experience, as well as handy information from students who come from the host country that they will be travelling to.

STUDY AND STUDENT ORGANIZATIONS

tilburguniversity.edu/students/studying/student-associations

Study and student associations are a great place to meet like-minded students and make new friends. Among the student organizations in Tilburg are:

- **ESN Tilburg:** an active internationally-minded organization aimed at enrichment of (international) student life in Tilburg.
- **Enactus:** a community of student, academic and business leaders committed to using the power of entrepreneurial action to transform lives and shape a more sustainable world.
- **AEGEE:** one of Europe's biggest interdisciplinary student organizations, striving for a diverse and borderless Europe.
- **AISEEC:** a non-profit student organization aiming to develop leadership among students by providing a safe platform where they can discover what matters to them, while pushing them to constantly take up new challenges.
- **AWAKE International (Association for World Affairs):** aimed at raising awareness of important social and environmental issues, and at providing aid through fundraising events.
- **Asset:** the study association of the Tilburg School of Economics and Management.
- **Magister:** the study association of the Tilburg Law School.

SPORTS FACILITIES

tilburguniversity.edu/about/culture-and-sports/sports-center

The state-of-the-art Sports Center offers a wide variety of sports and exercise facilities at all levels. The Center has two large sports halls, fitness rooms, a dedicated weight-training area, squash courts and a sauna. The outdoor facilities include a semi-water-based hockey pitch, six tennis courts and a beach volleyball pitch, among others. The Sports Center offers over 45 sports activities, including Zumba, rock climbing, boxing and yoga.

Tilburg University also has a number of active student sport associations that make use of the sport center and its facilities. For example: T.S.B.V. Pendragon (Basketball), T.S.V.V. Merlijn (Soccer), T.S.G.V. Underpar (Golf), T.S.R.C. Tarantula (Rugby)

TILBURG UNIVERSITY SUMMER SCHOOL

tilburguniversity.edu/summerschool

The Tilburg University Summer School offers students a taste of living and studying in Tilburg. It offers a unique way of combining learning with fun and meeting students from all over the world. Visit the website for more information on the available courses, tuition fees, social program and more.