

UNIVERSITY OF LATVIA

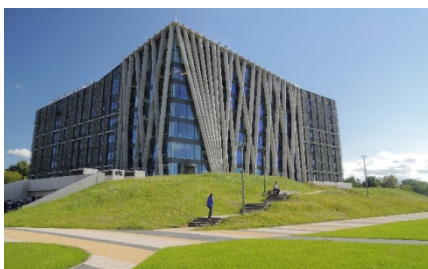
| | |
|---------------|---|
| Erasmus code | LV RIGA01 |
| PIC | 999871830 |
| Address | Raina Blvd. 19, Riga, LV-1586, Latvia |
| Website | https://www.lu.lv/en/ |
| Rector | Professor Indrikis MUIZNIEKS |

INTERNATIONAL RELATIONS

| | |
|--|---|
| Address | Raina Blvd. 19, Riga, LV-1586, Latvia |
| Website | https://www.lu.lv/en/admission/for-international-students/exchange/contacts/ |
| Erasmus Institutional Coordinator | Mrs. Aline GRZIBOVSKA |
| Phone | +371 6703 3997 |
| Fax | +371 6722 5039 |
| E-mail | ad@lu.lv |
| Head of Mobility Division | Ms. Sintija MACULEVICA |
| Phone | +371 6703 3968 |
| E-mail | sintija.maculevica@lu.lv |
| Contact person for outgoing students | Ms. Marta VILKAUSA |
| Phone | +371 6703 4406 |
| E-mail | marta.vilkausa@lu.lv |
| Contact person for incoming students | Ms. Liene MEINHARDE |
| Phone | +371 6703 4350 |
| E-mail | liene.meinharde@lu.lv |
| | Ms. Sintija URTANE |
| Phone | +371 6703 4336 |
| E-mail | sintija.urtane@lu.lv |
| Contact person for IIA Erasmus+ agreements with Programme Countries | Ms. Liene MEINHARDE |
| Phone | +371 6703 4350 |
| E-mail | liene.meinharde@lu.lv |
| Contact person for IIA Erasmus+ agreements with Partner Countries | Ms. Sintija URTANE |
| Phone | +371 6703 4336 |
| E-mail | sintija.urtane@lu.lv |

| INFORMATION FOR INTERNATIONAL STUDENTS | |
|---|--|
| Academic calendar 2020/2021 | |
| Autumn semester | |
| <i>registration week</i> | 31.08.2020 - 06.09.2020 |
| <i>studies</i> | 07.09.2020 - 23.12.2020 |
| <i>Christmas and New Year holidays</i> | 24.12.2020 - 03.01.2021 |
| <i>individual studies and exams</i> | 04.01.2021 - 29.01.2021 |
| Spring semester | |
| <i>registration week</i> | 02.02.2021 - 07.02.2021 |
| <i>studies</i> | 08.02.2021 - 28.03.2021 |
| <i>Easter holidays</i> | 29.03.2021 - 05.04.2021 |
| <i>studies</i> | 06.04.2021 – 06.06.2021 |
| <i>individual studies and exams</i> | 07.06.2021 - 04.07.2021 |
| Website | https://www.lu.lv/en/studies/study-process/academic-calendar/ |
| Application deadlines | Autumn Spring May 15 th November 15 th |
| Nomination deadlines (by e-mail exchange@lu.lv) | Autumn Spring April 15 th October 15 th |
| Language of instructions | The official language of instruction is Latvian. Courses for international students are offered in English. |
| Language requirements | <u>English B1</u> Students applying for the following faculties have additional language requirements: Faculty of Humanities: <u>Bachelor level programmes:</u> English philology: English B2; Modern Languages and Business Studies: English B2; French philology: French, Italian or Spanish B1; German philology: German B1; Russian philology: Russian B1; <u>Master level programmes:</u> English philology: English B2; Romance studies: French, Italian or Spanish B2 German philology: German B2; Russian philology: Russian B2 Faculty of Medicine: Medicine and Dentistry programmes: B2 |
| Application information for incoming students | https://www.lu.lv/en/admissions/exchange-studies/ |
| Accommodation information | https://www.lu.lv/en/studies/student-life/accommodation/ |

| | |
|---|---|
| Courses for incoming students | https://www.lu.lv/en/admission/for-international-students/exchange/courses/ |
| Immigration information | https://www.lu.lv/en/admission/for-international-students/exchange/visas/ |
| General and Practical information for incoming students | https://www.lu.lv/en/admission/for-international-students/exchange/ |
| Credit points | 1 Latvian credit point = 1.5 ECTS |
| Approx. expenses per month | |
| Accommodation | 100 – 300 EUR |
| Food & drinks | 300 EUR |
| Books | 20 EUR |
| Local Transportation | 30 EUR |
| <i>Total</i> | <i>450 – 650 EUR</i> |



INTERNATIONAL COORDINATORS AT FACULTIES

| FACULTY OF BIOLOGY | |
|--|--|
| Departmental Coordinator | Assoc. prof. Liga OZOLINA-MOLLA |
| E-mail | liga.ozolina-molla@lu.lv |
| FACULTY OF CHEMISTRY | |
| Departmental Coordinator | Doc. Agnese OSITE |
| E-mail | agnese.osite@lu.lv |
| FACULTY OF COMPUTING | |
| Departmental Coordinator | Prof. Juris BORZOVS |
| E-mail | juris.borzovs@lu.lv |
| FACULTY OF BUSINESS, MANAGEMENT AND ECONOMICS | |
| Departmental Coordinator | Ms. Zane SVILANE |
| E-mail | zane.svilane@lu.lv |
| FACULTY OF EDUCATION, PSYCHOLOGY AND ART | |
| Departmental Coordinator | Ms. Laura FOMINA |
| E-mail | laura.fomina@lu.lv |
| FACULTY OF GEOGRAPHY AND EARTH SCIENCES | |
| Departmental Coordinator | Prof. Zaiga KRISJANE |
| E-mail | zaiga.krisjane@lu.lv |
| FACULTY OF HISTORY AND PHILOSOPHY | |
| Departmental coordinator for Department of History and Archaeology, Philosophy and Ethics | Dr. Artis SVECE |
| E-mail | artis.svece@lu.lv |

INTERNATIONAL COORDINATORS AT FACULTIES

| FACULTY OF HUMANITIES | |
|---|--|
| Departmental Coordinator | Ms. Jekaterina CERNEVSKA |
| E-mail | jekaterina.cernevska@lu.lv |
| FACULTY OF LAW | |
| Departmental Coordinator | Ms. Daina ANDREJEVA |
| E-mail | daina.andrejeva@lu.lv |
| FACULTY OF MEDICINE | |
| Departmental Coordinator | Mr. Ivars PEKAINIS |
| E-mail | ivars.pekainis@lu.lv |
| FACULTY OF PHYSICS, MATHEMATICS AND OPTHOMETRY | |
| Departmental Coordinator, Coordinator for Department of Physics | Dr. Janis CIMURS |
| E-mail | janis.cimurs@lu.lv |
| Coordinator for Department of Mathematics | Assoc. prof. Ingrida ULJANE |
| E-mail | ingrida.uljane@lu.lv |
| Coordinator for Department of Optometry | Aija TOLSTOJA |
| E-mail | aija.tolstoja@lu.lv |
| FACULTY OF SOCIAL SCIENCES | |
| Departmental Coordinator: | Ms. Aleksandra KJAKSTE |
| E-mail | aleksandra.vonda@lu.lv |
| FACULTY OF THEOLOGY | |
| Departmental Coordinator | Doc. Janis RUDZITIS-NEIMANIS |
| E-mail | janis.rudzitis@lu.lv |