



**BME**  
**240**

**Join BME  
where  
new discoveries await you !**













# BME IN NUMBERS

8 faculties



1.300 academic staff

800 with PhD/DLA

70 departments



23.0000 students

2.200 international  
students

# FACULTIES



Faculty of Civil Engineering (1782)



Faculty of Mechanical Engineering (1871)



Faculty of Architecture (1873)



Faculty of Chemical Technology and Biotechnology (1873)



Faculty of Electrical Engineering and Informatics (1949)



Faculty of Transportation and Vehicle Engineering (1951)



Faculty of Natural Sciences (1998)



Faculty of Economic and Social Sciences (1998)

# NOBEL LAUREATES GRADUATED FROM BME



Dénes (Dennis) GÁBOR (1900 – 1979)  
holography in 1971

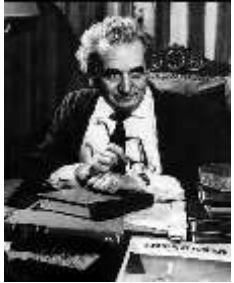


Jenő (Eugene) WIGNER (1902 – 1995)  
theoretical physics in 1963



György (George) OLÁH (1927– 2017)  
organic chemistry in 1994

# WORLD FAMOUS ALUMNI



**Theodore von KÁRMÁN**  
Aeronautics & Mathematics  
(1881–1963)



**Leo SZILÁRD**  
Nuclear chain  
reaction  
(1898–1964)



**Donát BÁNKI**  
Carburetor  
(1859 – 1922)



**Ede TELLER**  
Hydrogen bomb  
(1908– 2004)



**Károly ZIPERNOWSKY**  
Transformer  
(1853–1942)



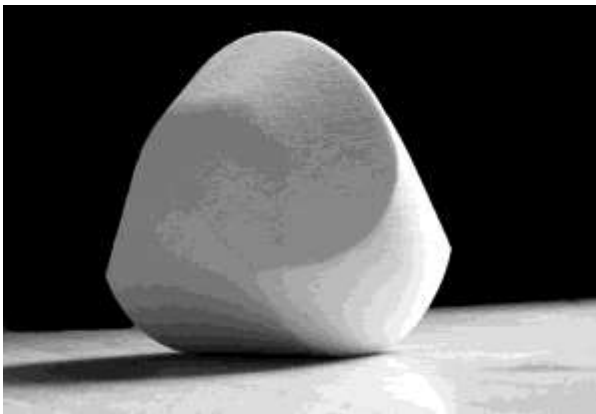
# FAMOUS INVENTIONS



Ernő RUBIK  
(1944-)



MaSat-1 (Magyar Satellite-1)



Lifeboat – always stands back up if falling over

# RANKINGS

## ACADEMIC RANKING OF WORLD UNIVERSITIES (BME 801-900)

- ❑ Mechanical Engineering (201-300)
- ❑ Faculty of Natural Sciences – Mathematics (301-400)

## QS MAIN RANKING (BME 801-1000)

- ❑ Engineering - Mechanical, Aeronautical & Manufacturing (201-250)
- ❑ Material Science (351-400)
- ❑ Chemistry (351-400)
- ❑ Broad subject area: Engineering and Technology (273)

# EDUCATION AT BME

- ❑ Engineering education:

  - BSc programs (7-8 semesters)

  - MSc programs (3-4 semesters)

  - PhD Programs in 12 doctoral schools (2+2 years)

- ❑ Full BSc, MSc and PhD curricula both in Hungarian and English

- ❑ Continuing Engineering Education, postgraduate courses, MBA, etc.



# STUDENT EXCHANGE AT BME

- ❑ Part time: 1 or 2 semesters
- ❑ Erasmus+ programme or Freemovers
- ❑ Great experience for a short time
- ❑ Various study fields in 8 faculties: 43 English courses
- ❑ Deadlines:
  - ✓ Fall semester: 15 May
  - ✓ Spring semester: 30 November



[www.bme.hu/?language=en](http://www.bme.hu/?language=en)

# Focus points for Brunel University students

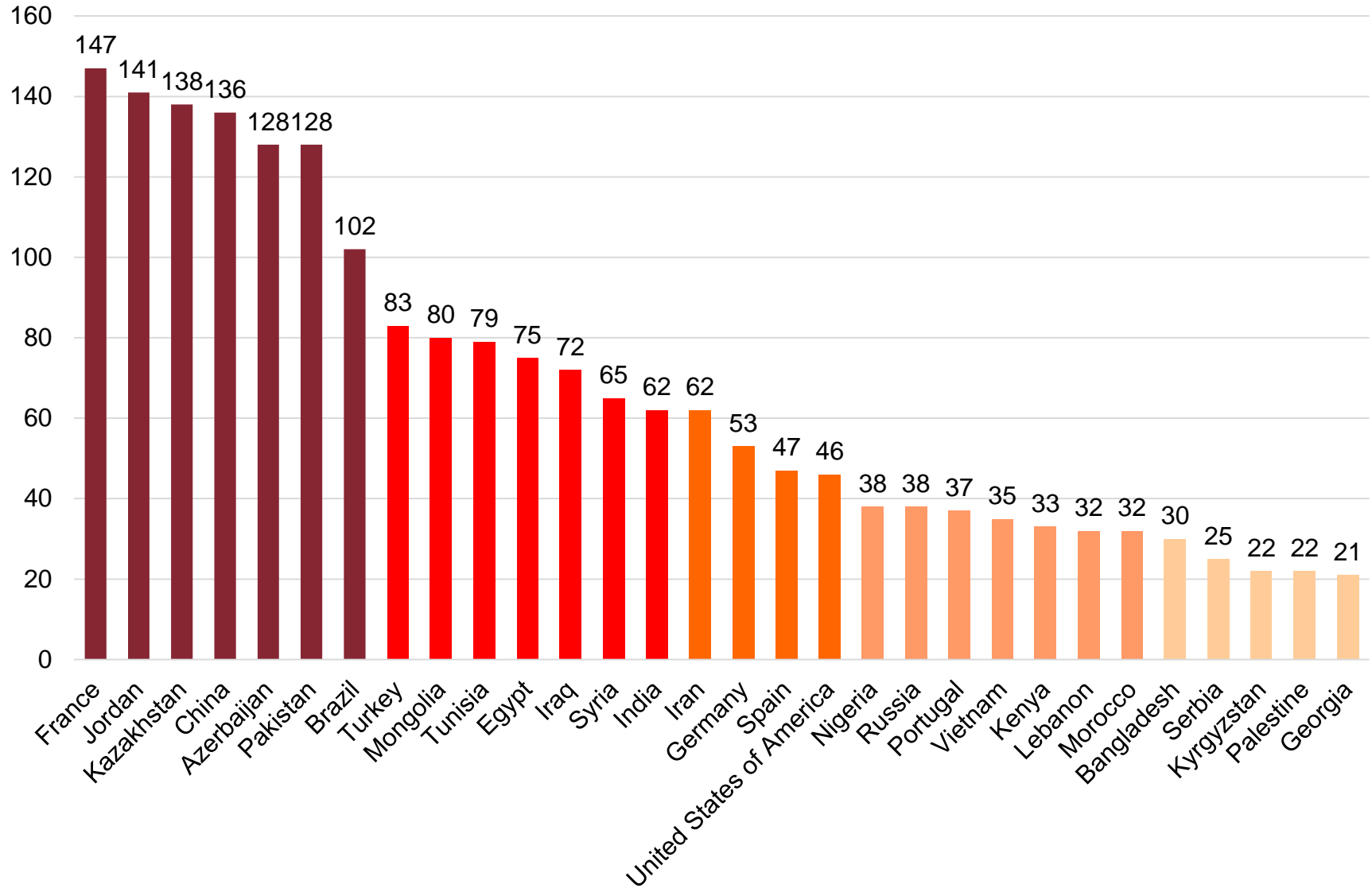


## Advantages of BME:

- Great central Europe location
- Safe and lively capital city
- Cheap living costs
- Lots of international students

- ✓ Transport engineering: robotics, autonomous vehicles
- ✓ BME Formula Racing Team – be a part of it!
- ✓ Student Associations in Mechanical Engineering – site visits weekly
- ✓ Civil Engineering – study visit on the Danube to see the bridges
- ✓ Natural Sciences – labor visits
- ✓ Physicist Engineering BSc

# INTERNATIONAL STUDENTS AT BME





# CAMPUS



BME CH building, 1904



BME K building, 1909



BME Q building, 2010



Training reactor, 1971



New walking areas 2012



BME Innovation and Research Center  
(under construction)



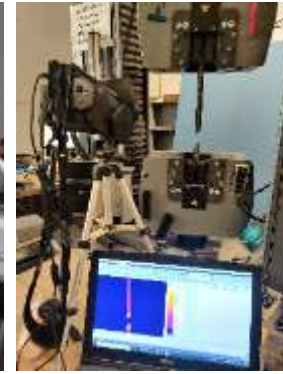
# STUDYING IN BME



Plenary lectures



Seminars



Laboratories, hands-on experiences



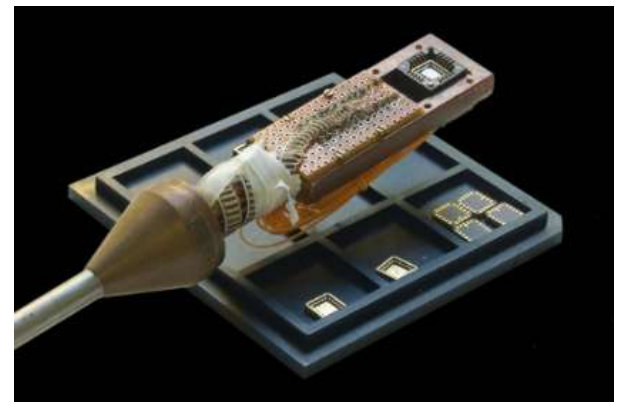
Free hand drawing – digital planning



Modern technologies and innovative solutions

# BME AS A RESEARCH UNIVERSITY – STRATEGIC RESEARCH AREAS

- ❑ Artificial Intelligence, smart cities, robotics
- ❑ Intelligent environment and e-technologies
- ❑ Sustainable energy
- ❑ Vehicle technology, autonomous driving, transportation and logistics
- ❑ Biotechnology, health and environment protection
- ❑ Nanophysics, nanotechnology and materials science
- ❑ Disaster prevention: modern engineering methods





# INTERNATIONAL COLLABORATIONS



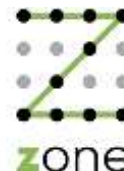
DAIMLER



Morgan Stanley



SIEMENS



# INDUSTRY-FUNDED LABS

**Ericsson High  
Speed Net Lab**



**Nokia Traffic Lab**



**BME Morgan Stanley  
Financial Innovation Lab**



Industrial research carried out at the university: participation  
in cutting edge R&I activities

HR objectives for the company: talented students (talents  
proven by the project involvement) are employed after the  
degree

# STUDENT LIFE IN BME



BME University Festival



BME Sport centre



Choir



Szkéné theatre



Student circles



Canoe on the Danube



BME Formula Racing Team



Field trips







# Thank you for your attention!

**BME**  
**240**



[www.bme.hu](http://www.bme.hu)