



## ENAC - Ecole Nationale de l'Aviation Civile The French Civil Aviation University

---

Erasmus ID Code

FTOULOUS18

Address

7 Avenue Edouard Belin  
BP 54005  
31055 Toulouse Cedex 4

Director General

Olivier CHANSOU

Erasmus Coordinator - Head  
of the International Office

Marc CHOUFFOT

Email

[study\\_abroad@enac.fr](mailto:study_abroad@enac.fr)

Website address

<http://www.enac.fr>



## Nomination and Application Deadline



	Fall Semester S 7 and S 9	Spring Semester S 8	
Nomination Deadline	May 1st	October 15th	By Email to <a href="mailto:study_abroad@enac.fr">study_abroad@enac.fr</a>
Application Deadline	May 1st	October 15th	<a href="https://aurion-prod.enac.fr/faces/CreationCompte.xhtml">https://aurion-prod.enac.fr/faces/CreationCompte.xhtml</a>



## Application Documents

### *For exchange students*

- Curriculum Vitae - pdf file format
- Id photo (3.5x4.5 cm, color, less than 100 kbytes) - jpeg file format
- Cover Letter stating their reasons for applying at ENAC and for the specific programs they have selected - pdf file format.
- A copy of the Passport pages or ID card showing names, date and place of birth, and date of expiration pdf file format.
- Official Transcript of records in English, and description of the institutional grading/credits system if different from the official ECTS system - pdf file format. All transcripts shall be bundled into one single file in reverse chronological order (latest first) when possible.
- Language proficiency test in the language of instruction (French or English)
- Learning agreement signed by Institution of Origin – OLA or pdf file format
- Proof of enrolment at your university - pdf file format
- for EU citizen copy of the EU health insurance card - pdf file format.
- for non-EU citizen copy of the health insurance will be required on the day of arrival - pdf file format
- IT Policy (Charte informatique) to be signed by student and uploaded in Aurion with your application : <https://e-campus.enac.fr/moodle/mod/folder/view.php?id=45030>
- Official language tests in French or English (B2 Level are required in the language of instruction, to be able to follow all the French and/or English courses in the program).

### *For Double Degree students*

In addition to all the above:

- 2 recommendation letters by teachers or professionals related to the field of your applied field of study - pdf file format.
- Official language proficiency tests (TOEFL, TOEIC, ...):
  - Level B2 in French required to be able to follow all the French courses in the program.
  - Level B1 in English required to be able to validate a B2 level at the end of the program, compulsory to obtain the diploma



## Courses and Projects



Exchange students can apply for the following programs at ENAC

---

### *ENAC Ingénieur Programme (IENAC) - equivalent to a MSc in Aerospace*

---

The curriculum comprises 6 semesters (from semester 5 to semester 10). Semesters 5 to 8 are given in French. Semester 9 is given in English only for OPS Major. Semester 10 is an end of studies project within a company and is accessible **only to double-degree** students.

Within the IENAC Semesters 7, 8 and 9 you can choose among several majors:

- Major Avionic systems (AVI) (in French)
- Major Space and aeronautical communications (SAT) (in French)
- Major Operations and Safety (OPS) (S7 and S8 in French, S9 in English)
- Major Informatics systems of air transport (SITA) (in French)

Students once admitted will also have to choose among a set of minors (75 teaching hours) given in English or in French. You can indicate your 1<sup>st</sup> choice in the learning agreement but they will be allocated later on in September according to remaining places. We will ask you in July to make 3 choices.

---

### *Master of Science in International Air Transport System Engineering and Design (IATSED)*

---

Courses are given in English. The curriculum is made of 4 semesters. Students can choose among semesters 7, 8 or 9.

---

### *Master of Science in Aerospace Systems - Navigation and Telecommunications (AS-NAT)*

---

Courses are given in English. The curriculum is made of 4 semesters. Students can choose the semester 7.

---

### *Master of Science in International Air Transport Operations Management (IATOM)*

---

Courses are given in English. The curriculum is made of 4 semesters. Students can choose among semesters 7, 8 or 9. Due to a very limited number of places available (maximum 2) these places are only available to selected partners.



## How to choose my courses



**Exchange students may not combine courses from different semesters or different programs/majors.**

For example, if you choose to come to ENAC in Fall and follow the semester 9 of the IENAC program (or IATSED/AS-NAT program) you can only choose courses from the semester 9 of the program that you have selected. You cannot “cherry pick” some courses from semester 7 and some courses from semester 9 in the IENAC program. You cannot “cherry pick” some courses from the IATOM program and some courses from the IATSED program, etc...

To help you, please check the pre-filled examples of Learning Agreements on this page:

<https://e-campus.enac.fr/moodle/course/view.php?id=270>

The selection of courses must always be approved by the home University (validated learning agreement either pdf file or through Erasmus Online Learning Agreement platform).

**Examination re-sits:** There is only one exam session per exam. Re-sits are decided by the board of examiners and are not organised during the same semester if they are organised at all.

**Course catalogue** is available at <http://formations.enac.fr/en/index.html>



## Academic Calendar



Each program has its own start and end dates.

For students applying to **double degree program**, the 2 weeks aeronautical catch-up module is **mandatory** :

**IMPORTANT** : Informations below are provided for information purposes only and are subject to change. The start date to be taken into account will be specified on the admission letter.

<b>approximative dates Start of the courses</b>	<b>Odd/Fall Semester</b> <i>from the end of August/ beginning of September to the end of January/beginning of February</i>	<b>Even/Spring Semester</b> <i>from the end of January/beginning of February to the end of June</i>
<b>IENAC24 (4<sup>th</sup> year)</b>	<i>September 08<sup>th</sup></i>	<i>January 26<sup>th</sup></i>
<b>IENAC23 (5<sup>th</sup> year)</b>	<i>September 29<sup>th</sup></i>	<i>S10 Not open for exchange students</i>
<b>IATSED25 (1<sup>st</sup> year)</b>	<i>September 1<sup>st</sup></i>	<i>January 19<sup>h</sup></i>
<b>AS-NAT25 (1<sup>st</sup> year)</b>	<i>September 1<sup>st</sup></i>	<i>S8 Not open for exchange students</i>
<b>IATSED24 (2<sup>nd</sup> year)</b>	<i>September 15<sup>th</sup></i>	<i>S10 Not open for exchange students</i>
<b>IATOM25 (1<sup>st</sup> year)</b>	<i>September 1<sup>st</sup></i>	<i>February 2<sup>nd</sup></i>
<b>IATOM24 (2<sup>nd</sup> year)</b>	<i>September 08<sup>th</sup></i>	<i>S10 Not open for exchange students</i>



## Holidays

- October - 1 Week (All Saints)
- December - 2 Weeks (Christmas)
- February - 1 Week (Winter)
- April - 1 Week (Easter)



## Credits and Grades



ENAC partly applies the ECTS (European Credit Transfer System) which is based on the principle that 60 credits measure the workload of a full-time student during one academic year.

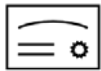
Scores are given on a 0 to 20/20 scale (20 being best). Validation of credits are dependent on performance at examinations with regards to a predefined threshold for the course. The Coefficients and threshold grades sheet for each semester. Program is given to students at the beginning of the semester. Credits are granted for courses where the student has achieved a score equal or above 10/20 or for groups of courses (modules) where the weighted average score is above 10/20. Exchange students are **not** subject to the 7/20 threshold within a module.

### Grades for acquired credits are given on the following basis:

best 10% of the group: A	following 25% of the group: B
following 30% of the group: C	following 25% of the group: D
last 10% of the group: E	

Students failing will not be granted credits and will receive the grade letter F.

Validation of semester to gain access to the following semester requires all credits validated in the semester.



## Visa

Students from many countries, especially outside Europe, need to apply for a visa/residence permit for studies before entering France. Further information and application forms regarding visa/residence permit may be obtained from the French Embassy or Consulate in the home country or from CampusFrance on [www.campusfrance.org](http://www.campusfrance.org)

All Non EU students are strongly advised to apply as soon as they receive their letter of acceptance.



## Health Insurance

---

### *EU/EEA citizens and the European insurance card*

---

Students from EU/EEA member countries should bring the European Insurance card. The card states that the cardholder is entitled to health care on the same conditions and at the same price as French citizens. Students from UE are covered by the Social security of their country through the health insurance European card. The “EU-card” does not mean that supplementary insurance is not necessary. Students may still need it to reduce the health care costs.

---

## Non EU /EEA citizens

---

It is very important that students from non EU/EEA countries have a valid and complete insurance coverage since it is a prerequisite for securing a visa. Consequently, we strongly advise students to buy a travel/study abroad insurance in their home country before arrival in France. Important areas that the insurance should cover; personal injury, medical and dental care, accidents, home transportation (in case of injury or illness).

Students from outside UE have to connect to the website: <https://etudiant-etranger.ameli.fr/#/> upload documents and print a certificate of Social security affiliation.

---

## Complementary healthcare insurance

---

It is advisable to take out private medical insurance to cover the portion of your medical expenses not covered by social security. You are free to choose any private medical insurance scheme, but we do advise you to take one of the two student medical insurance organizations, as they include "Student" insurance which covers public liability during training courses. You will be required to produce such insurance if you undertake a vocational training course with a company, when you sign the agreement with them. More information here: <https://www.etudiant.gouv.fr/en/welcome-france-2063>



## Registration

All international students at ENAC are provided with a Student card (Carte d'étudiant). This card gives access to the ENAC, to its restaurant with discount on meals, to computer rooms and to the individual housing at ENAC. The card gives also access to discounts for cinemas, some restaurants and many other activities.



## French Language Courses

ENAC offers free French language courses (Tests will be organized to create level groups), 2 hours per week during fall and spring semesters.



## Buddy Program



ENAC has set up a Buddy Program to help students settle in France. The principle is to link a French student with an international student studying at ENAC. French students will provide them with useful tips about the academic and social activities on campus, life in Toulouse and France.

Registration link: <https://sites.google.com/view/enac-international-club/buddy-program/applications>

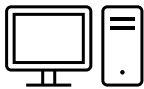


## Accommodation

ENAC has on campus housing for students. There are several levels of housing types. Housing for exchange students has to be reserved in advance; the type of accommodation is dependent on the places available. Housing application is done on the ENAC site:

<https://www.enac.fr/en/campus-accommodation-0>

Housing details will be given to students accepted by ENAC in June/July for fall semester or in December for spring semester applications. After your application, for all questions about housing, please send an email to [hebergement@enac.fr](mailto:hebergement@enac.fr)



## E-mail address / Account

All ENAC students receive a personal e-mail account. The account is administered through the Study Advisor. Students also get a computer lab card that grants access to ENAC and the computer labs.



## The Study Abroad Team



**Marc CHOUFFOT**

Head of International  
and Corporate  
Academic Relations



**Stéphanie LOPEZ**

International and  
Corporate Academic  
Relations Manager



**Maria VAUQUELIN**

International and  
Corporate Academic  
Relations Manager



**Jocelyne ZANETTE**

International &  
Corporate Academic  
Relations Assistant



All information presented here are available also on <http://studyabroad.enac.fr> login as guest with no password.

You will find more information about Enac at <https://www.enac.fr/fr/livret-daccueil-induction-book1>



