

# Celebrating and Supporting

Lesbian, Gay, Bisexual, Transgender, Intersex & Queer (LGBTIQ)  
Diversity & Inclusion: Getting Beyond Binaries

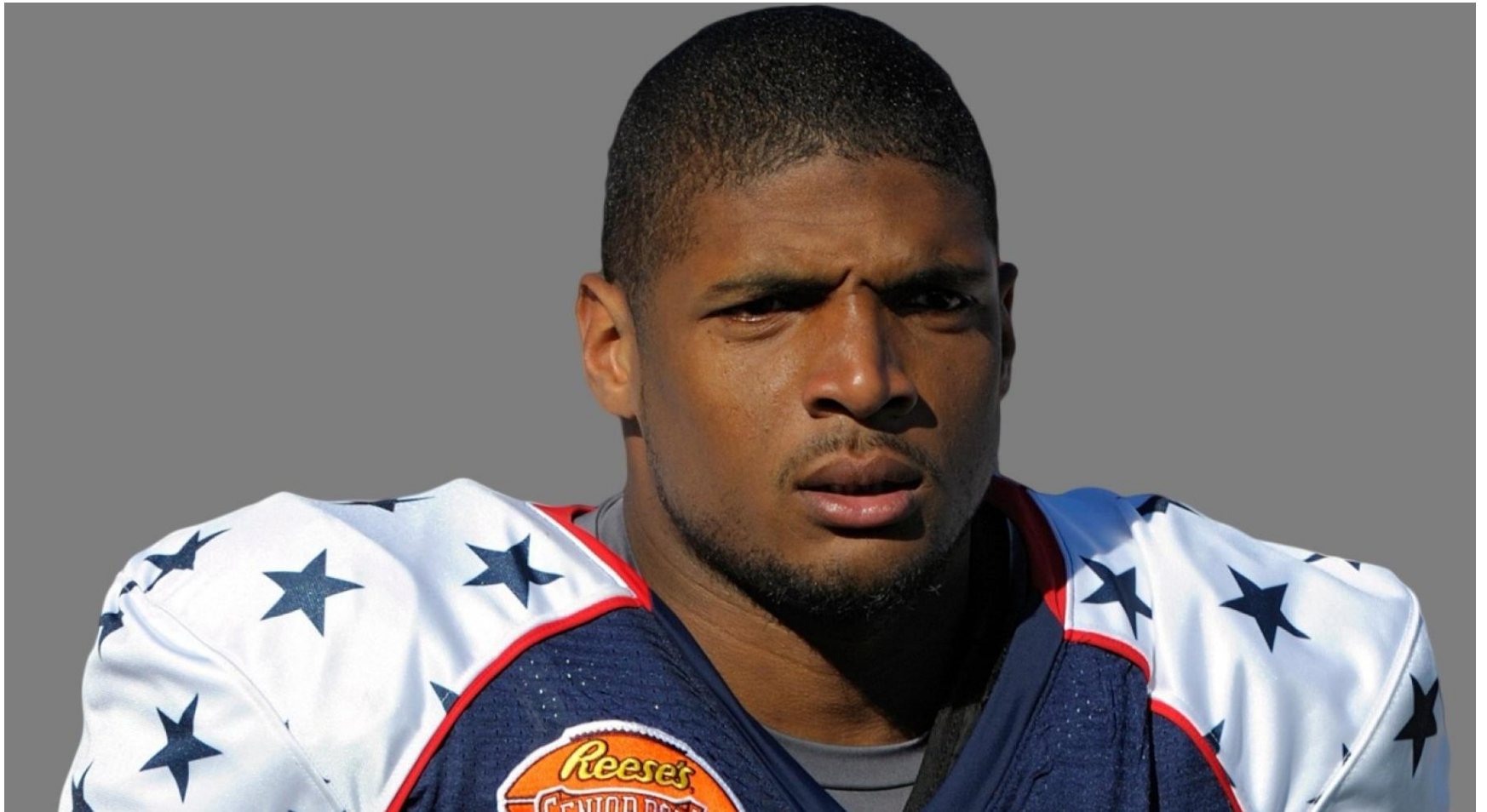


# Let's Get Talking 😊

Which famous USA athlete just came out as LGBT?

- Serena Williams (Tennis)
- Michael Sam (American Football)
- Johnny Weir (Figure Skating)

# Michael Sam (University of Missouri)



# Michael Sam and Johnny Weir



# In How Many States is there Same-Sex Marriage in the USA?

1. 5 States
2. 5 States and District of Columbia
3. 17 States
4. 17 States and District of Columbia
5. All 50 States and the District of Columbia

# In How Many States is there Same-Sex Marriage in the USA?

1. 5 States
2. 5 States and District of Columbia
3. 17 States
4. 17 States and District of Columbia
5. All 50 States and the District of Columbia

# What is GW's Unofficial Mascot?

- Hippo
- Banana Slug
- George Washington's False Teeth

# The Hippo!





# LGBTIQ Student Celebration



# LBGTIQ Student Support



# LGBTIQ Student Academic Success



7<sup>TH</sup> ANNUAL  
DC METRO LGBTQ STUDIES  
SYMPOSIUM PRESENTS:

CULTURE

RACE

# INTRICATE IDENTITIES

ABILITY

LGBTQ

**EXPLORING INTERSECTIONS OF RACE, CULTURE  
AND ABILITY IN THE LGBTQ COMMUNITY**

**NOVEMBER 3, 2012**

**SCHEDULE:**

1-1:30pm	Check-In
1:30pm	Welcome Address
2-2:50pm	Concurrent Session 1
3-3:50pm	Concurrent Session 2
3:50-4:20pm	LGBTQ Exhibit/Poster Viewing
4:30-5:20pm	Concurrent Session 3
5:30-6:30pm	LGBTQ & Ally Networking Dinner and Awards Ceremony (Colonial Club in Smith Athletic Center)

\* ASL Interpretive Services will be available during the entirety of the Symposium.

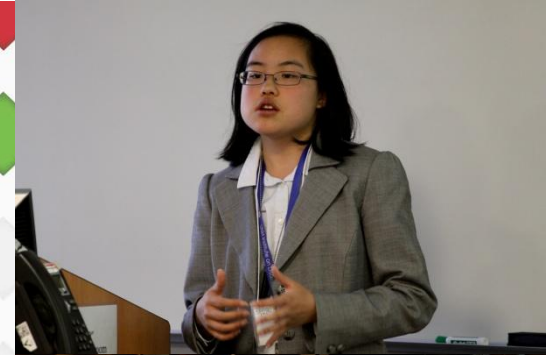
**LOCATION:**

Funger Hall (2201 G St., NW) • The George Washington University

**MORE INFORMATION:**

The 7th Annual DC Metro LGBTQ Studies Symposium is a collaborative effort among American University, Gallaudet University, George Mason University, Georgetown University, the George Washington University and the University of Maryland, College Park. The goal is to provide a forum for knowledge sharing and networking that furthers education, emboldens activists and provides professional development opportunities for lesbian, gay, bisexual, transgender and ally persons. The Symposium is an opportunity for both the academy and the community to come together to share their research, activism and work.

The Symposium is free and open to anyone with an interest in LGBTQ issues. For more information, please contact Jacob Wilson at [jwilson@gwu.edu](mailto:jwilson@gwu.edu) or visit <https://tinyurl.com/GWSymposiumInfo>.



**Free and Open to Everyone!**  
To register, visit <http://tinyurl.com/GWSymposium>.

**THE GEORGE  
WASHINGTON  
UNIVERSITY**  
WASHINGTON, DC

# LGBTIQ Student Career Exploration



# LGBTIQ Student Empowerment

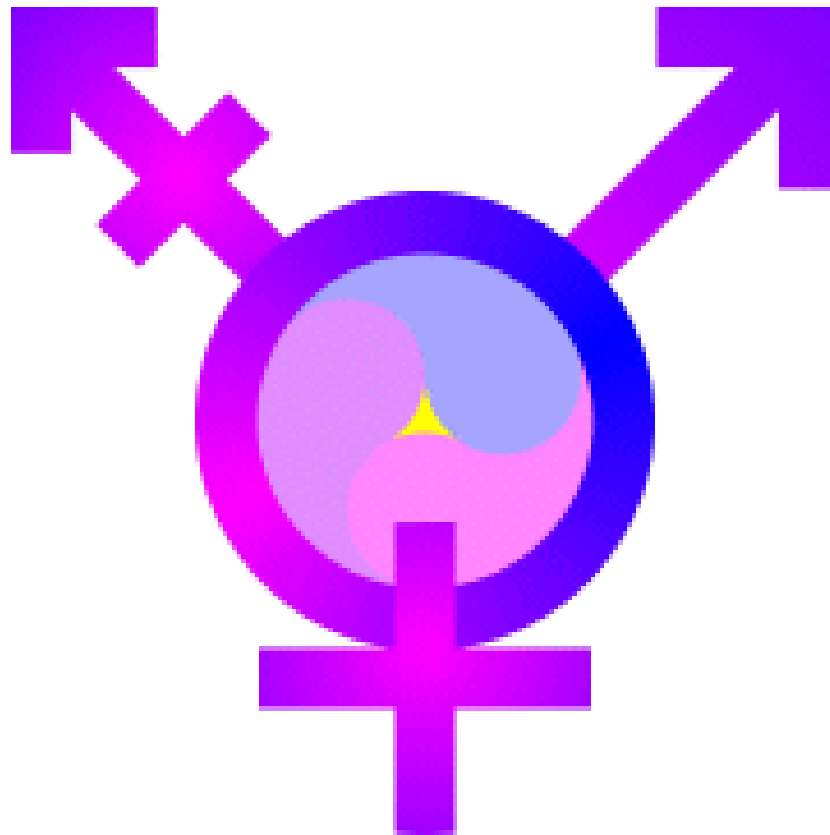


# LGBTIQ Student Wellness



# Student Housing

GW Gender Neutral Housing Policy



# LGBTIQ Student Space





# LGBTIQ Interfaith Programs




# LGBTIQ Distinguished Speakers



# LGBTIQ Student Organizations


**A DISCUSSION ON LGBT RIGHTS**



**Monday**  
**October 17**  
**7:00 - 8:30 PM**

**Law School**  
**Room L201**

A roundtable discussion on LGBT rights and the future of the movement. Legal experts will provide key information on what your rights are and how they are rapidly changing.

 **LAMBDA**  
**LAW**

[allied@gwu.edu](mailto:allied@gwu.edu)

**THE GEORGE**  
**WASHINGTON**  
**UNIVERSITY**  
WASHINGTON DC

# Service as a Queer Value



# LGBTIQ Student Athletes



<http://www.youtube.com/watch?v=9TeOFiWJMUG>

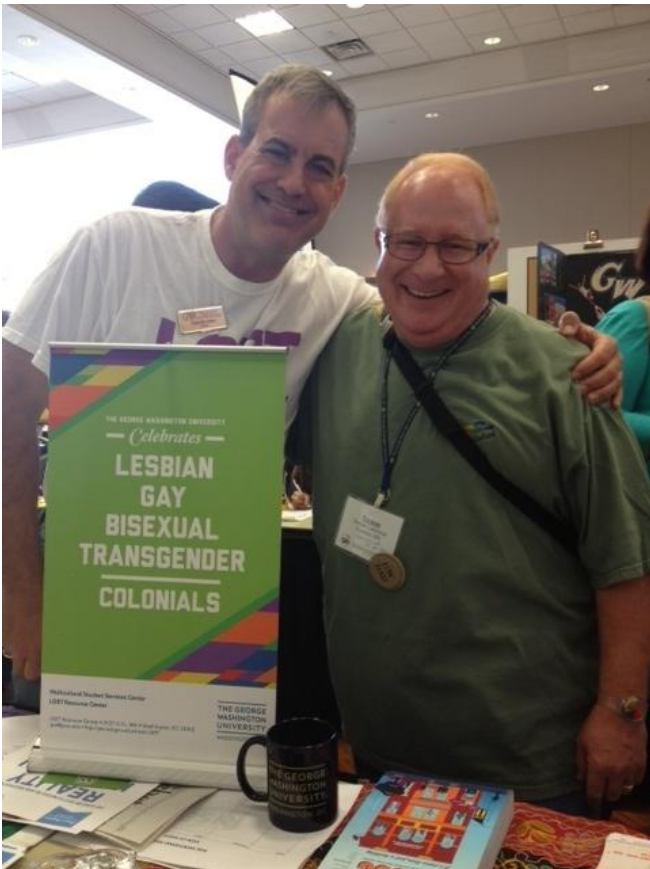
# LGBTIQ DC



# LGBTIQ White House Celebration

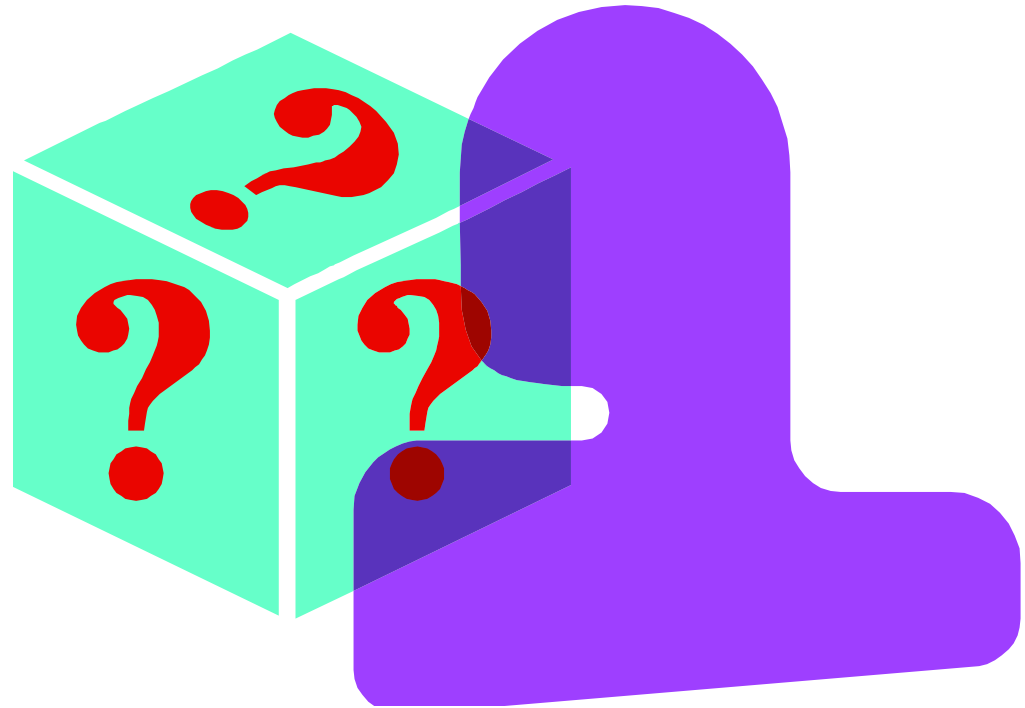


# LGBTIQ Parents





# Thoughts or Questions



# Sexual & Gender Identities: Beyond Binaries

# Sexual & Gender Identities: Beyond Binaries

- Biological Sex

# Sexual & Gender Identities: Beyond Binaries

- Biological Sex
- Gender Identity

# Sexual & Gender Identities: Beyond Binaries

- Biological Sex
- Gender Identity
- Gender Expression

# Sexual & Gender Identities: Beyond Binaries

- Biological Sex
- Gender Identity
- Gender Expression
- Sexual Behavior

# Sexual & Gender Identities: Beyond Binaries

- Biological Sex
- Gender Identity
- Gender Expression
- Sexual Behavior
- Sexual Orientation

# Sexual & Gender Identities: Beyond Binaries

- Biological Sex
- Gender Identity
- Gender Expression
- Sexual Behavior
- Sexual Orientation





# Sexual & Gender Identities: Beyond Binaries

- **Biological Sex**
- **Gender Identity**
- **Gender Expression**
- **Sexual Behavior**
- **Sexual Orientation**



# Sexual & Gender Identities: Beyond Binaries

- Biological Sex
- Gender Identity
- Gender Expression
- Sexual Behavior
- Sexual Orientation



# Sexual & Gender Identities: Beyond Binaries

- **Biological Sex**
- **Gender Identity**
- **Gender Expression**
- **Sexual Behavior**
- **Sexual Orientation**



# Sexual & Gender Identities: Beyond Binaries

- **Biological Sex**
- **Gender Identity**
- **Gender Expression**
- **Sexual Behavior**
- **Sexual Orientation**



# Biological Sex

Our biological sex is what we are born with  
in terms of chromosomes, hormones  
and sex characteristics.

MALE

INTERSEX

FEMALE



GENITALS DO NOT DETERMINE GENDER IDENTITY

# Gender Identity

- Collection of characteristics that are culturally associated with maleness and femaleness.
- Dichotomy or Binary of male/female, men/women is socially constructed.
- Internal identity that we develop at an early age.

MAN

GENDERQUEER

WOMAN



# Gender Expression

- External characteristics and behaviors that are socially defined as either masculine or feminine
- Outward expression of gender

MASCULINE

ANDROGYNOUS

FEMININE



# Sexual Behavior

The actual sexual behaviors a person engages in;  
different from sexual desire or sexual orientation.

Sex with  
different gender

Sex with  
all/both genders

Sex with  
same gender





# Sexual Orientation

The direction of our sexual interest toward members of the same, opposite, or both sexes.

GAY/  
HOMOSEXUAL

PANSEXUAL OR  
BISEXUAL

STRAIGHT/  
HETEROSEXUAL



# Kinsey Scale

0 – Exclusively Heterosexual

1 – Predominantly heterosexual, incidentally homosexual

2 – Predominantly heterosexual, but more than incidentally homosexual

3 – Equally homosexual and heterosexual

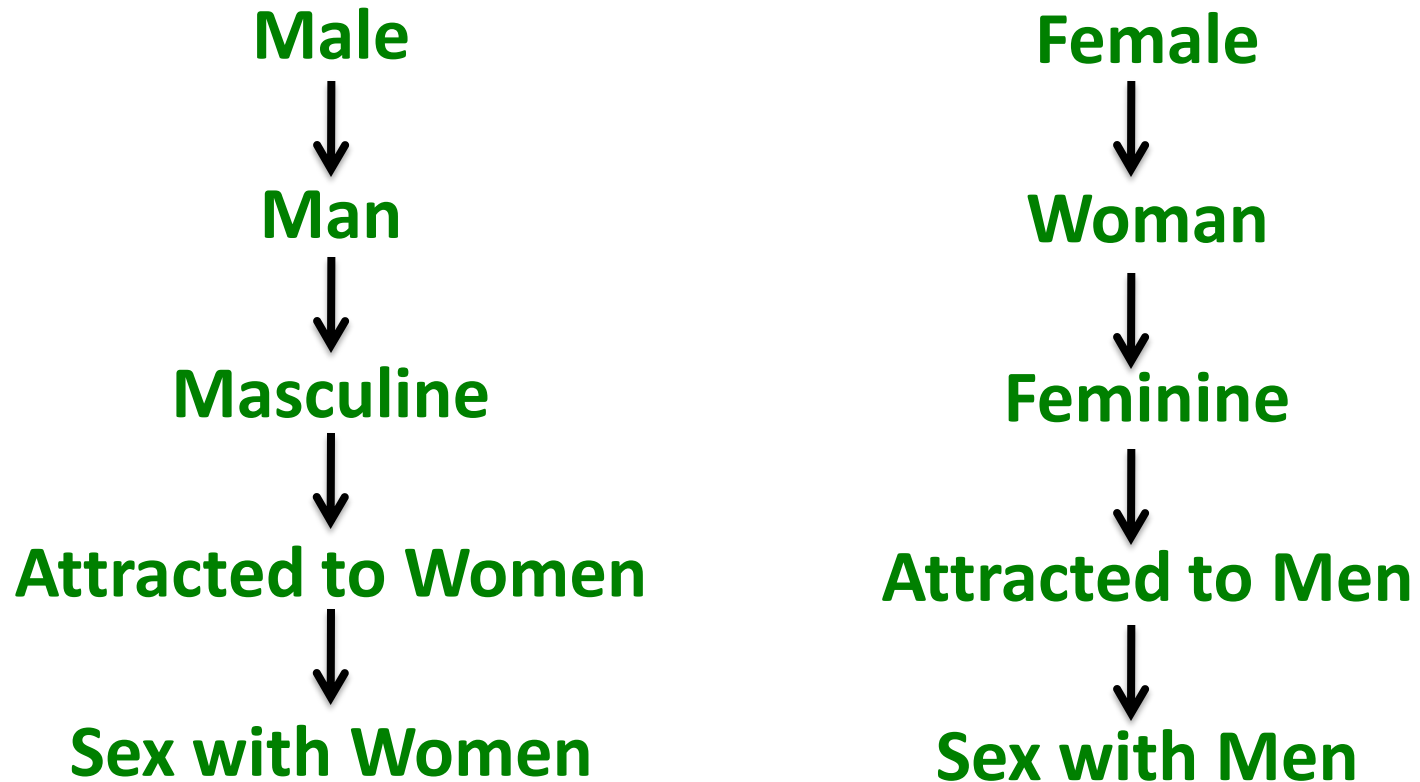
4 – Predominantly homosexual, but more than incidentally heterosexual

5 – Predominantly homosexual, incidentally heterosexual

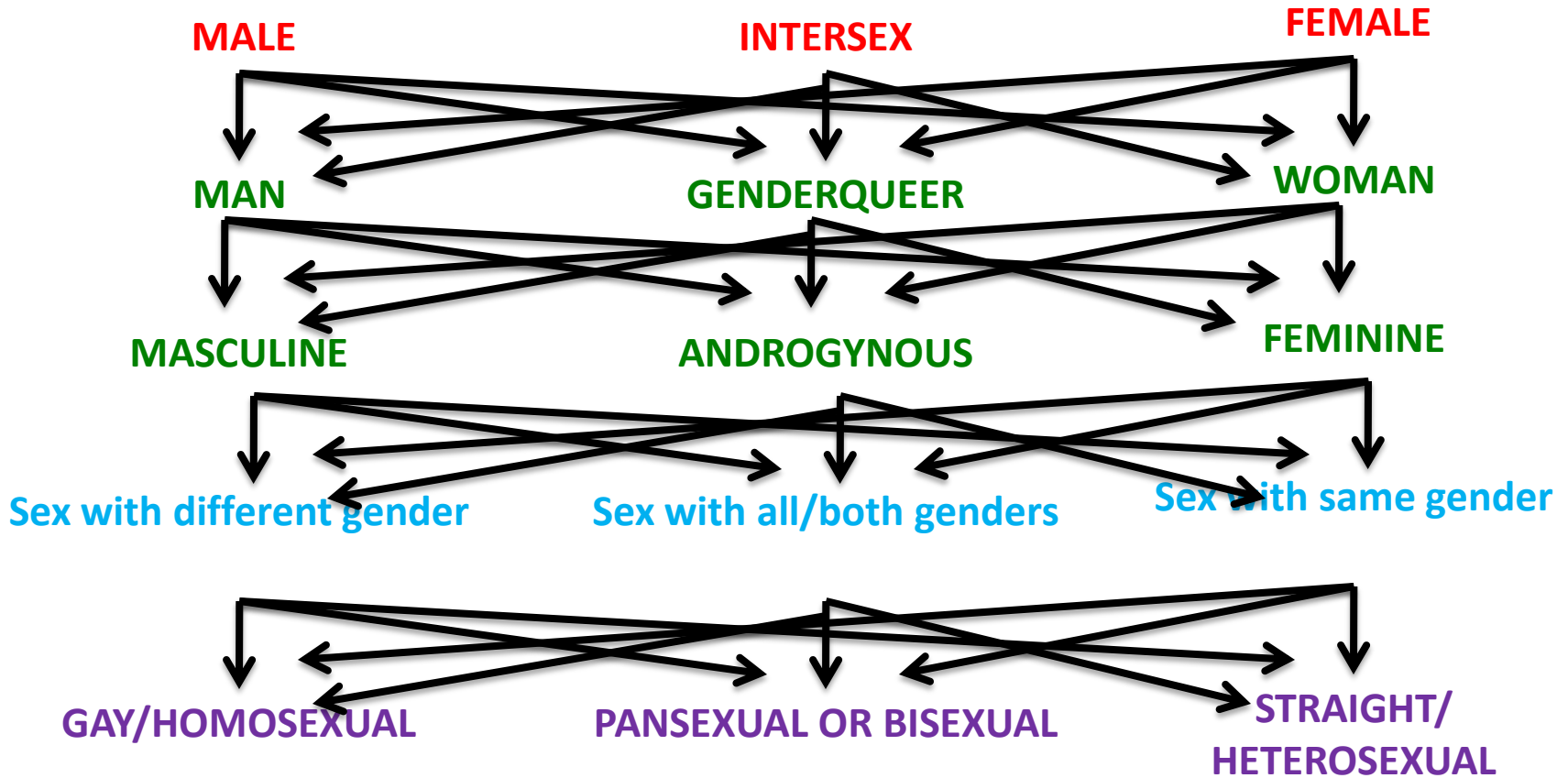
6 – Exclusively homosexual

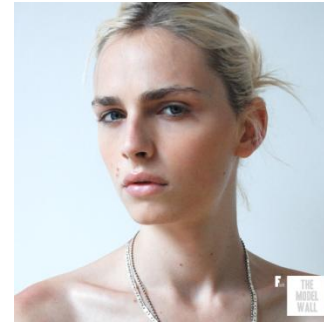
X – Asexual

# Traditional Gender Model



# Progressive Gender Model





**MALE**

**INTERSEX**

**FEMALE**

**MAN**

**GENDERQUEER**

**WOMAN**

**MASCULINE**

**ANDROGYNOUS**

**FEMININE**

**Sex with women**

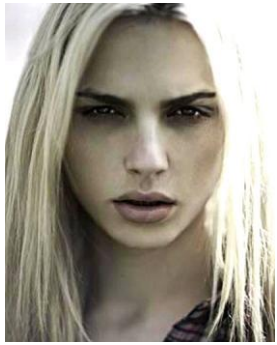
**Sex with all/both genders**

**Sex with men**

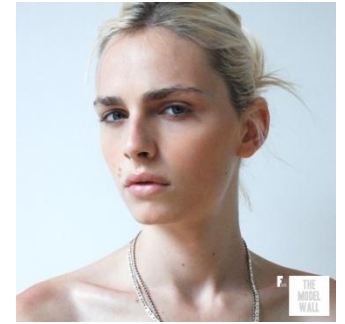
**Attracted to women**

**Attracted to  
both/all genders**

**Attracted to men**



# Model Andrej Pejic



**INTERSEX**

**FEMALE**

**MAN**

**GENDERQUEER**

**WOMAN**

**MASCULINE**

**ANDROGYNOUS**

**FEMININE**

**Sex with women**

**Sex with all/both genders**

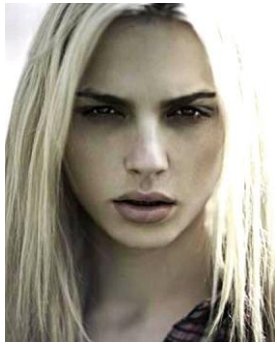
**Sex with men**

**Attracted to women**

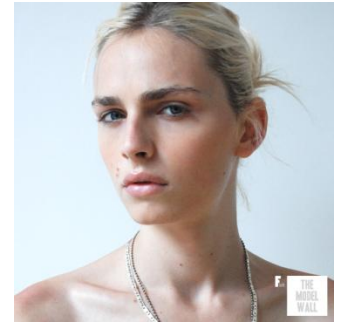
**Attracted to both/all genders**

**Attracted to men**





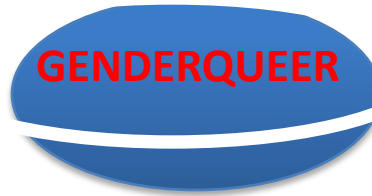
# Model Andrej Pejic



**INTERSEX**

**FEMALE**

**MAN**



**WOMAN**

**MASCULINE**

**ANDROGYNOUS**

**FEMININE**

**Sex with women**

**Sex with all/both genders**

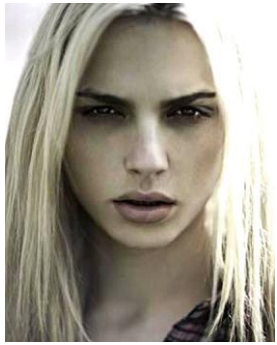
**Sex with men**

**Attracted to women**

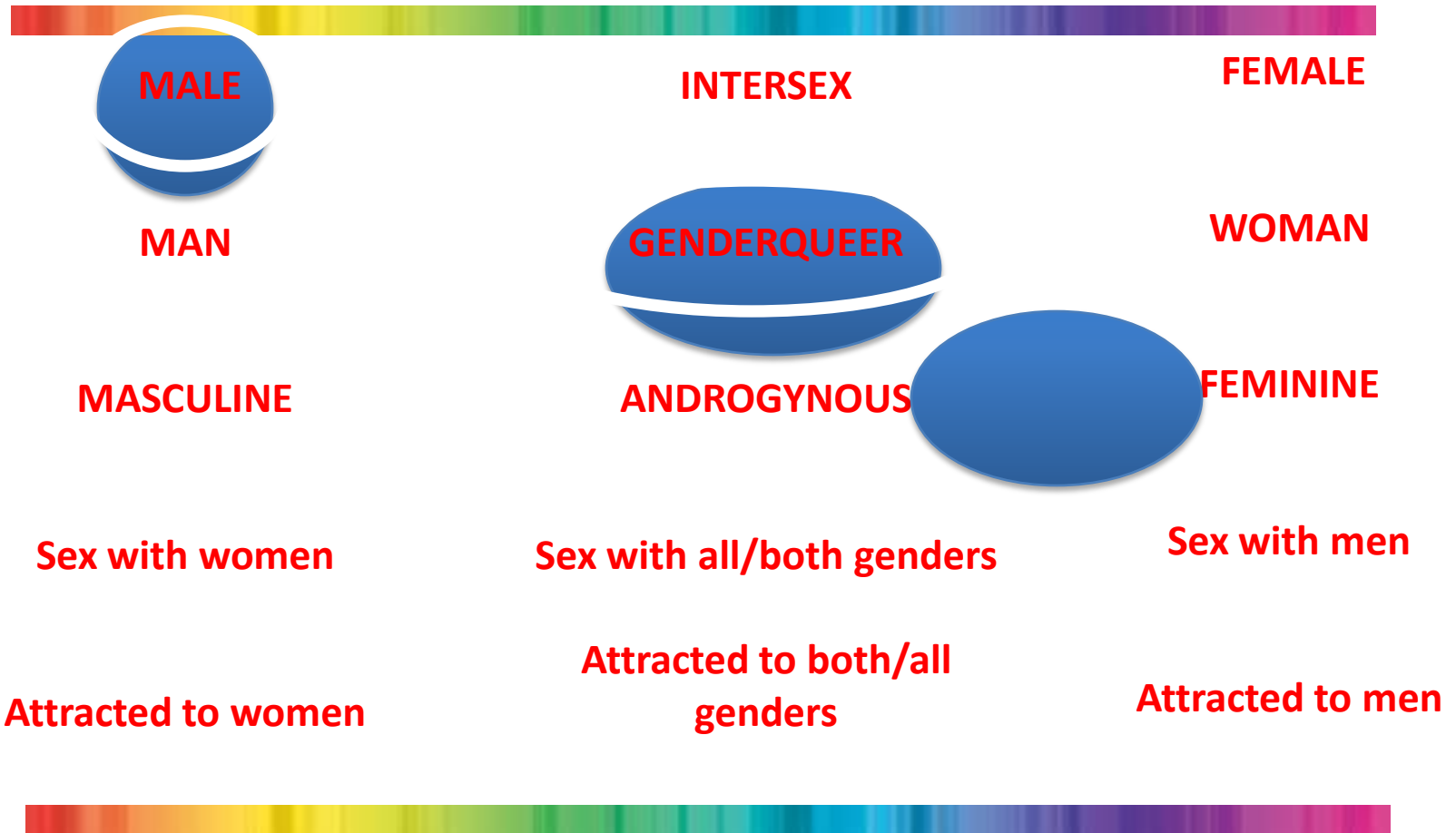
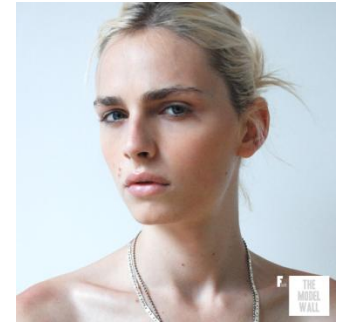
**Attracted to both/all genders**

**Attracted to men**

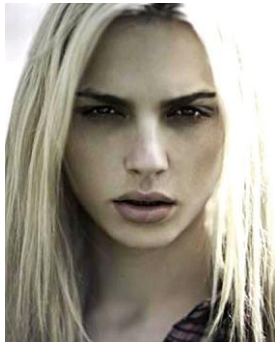




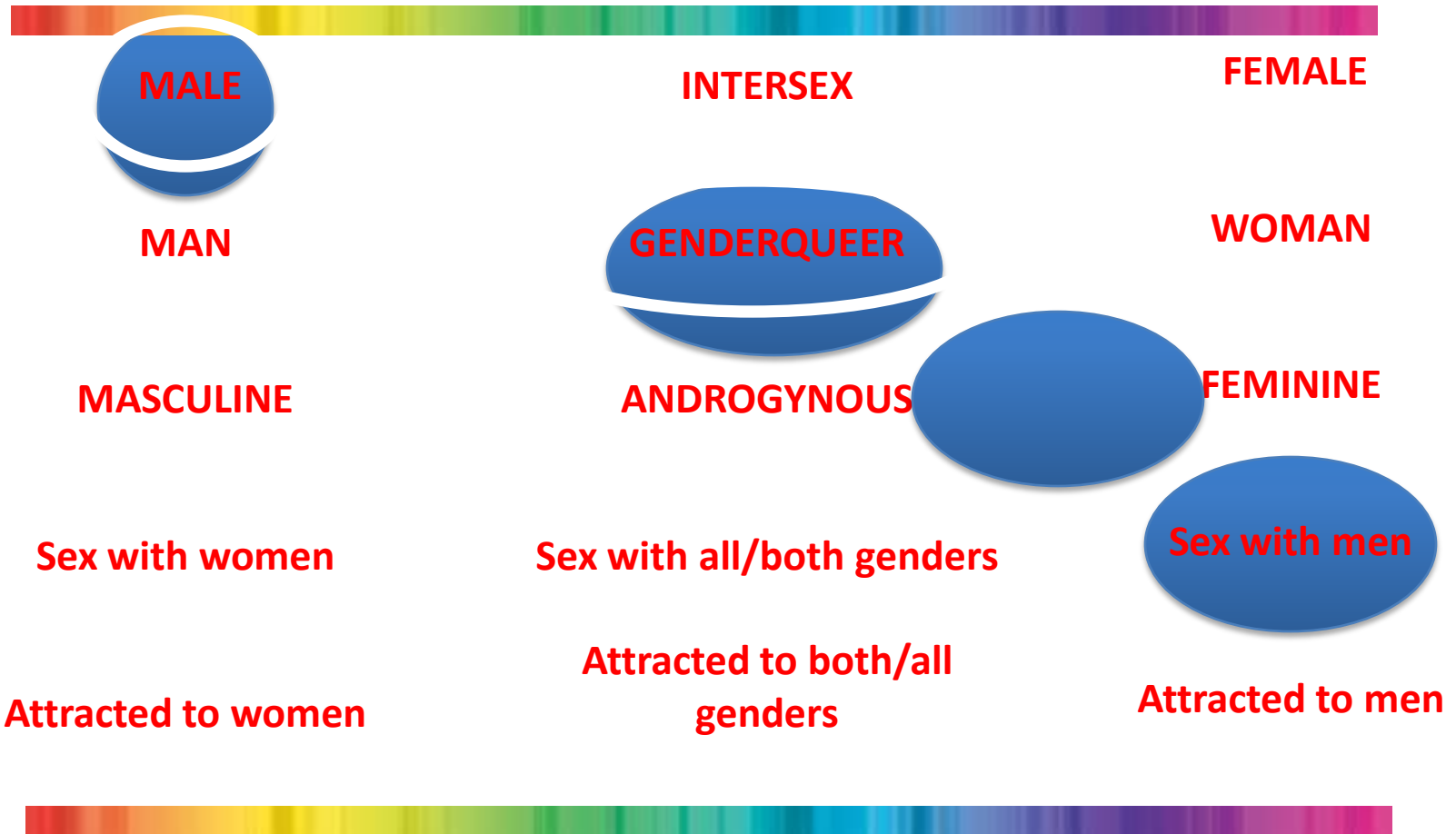
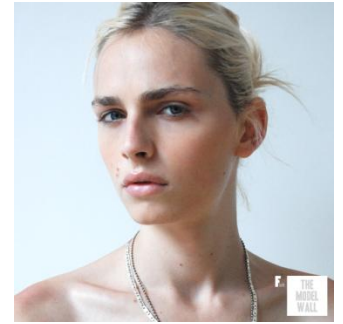
# Model Andrej Pejic

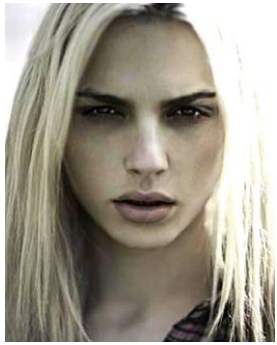




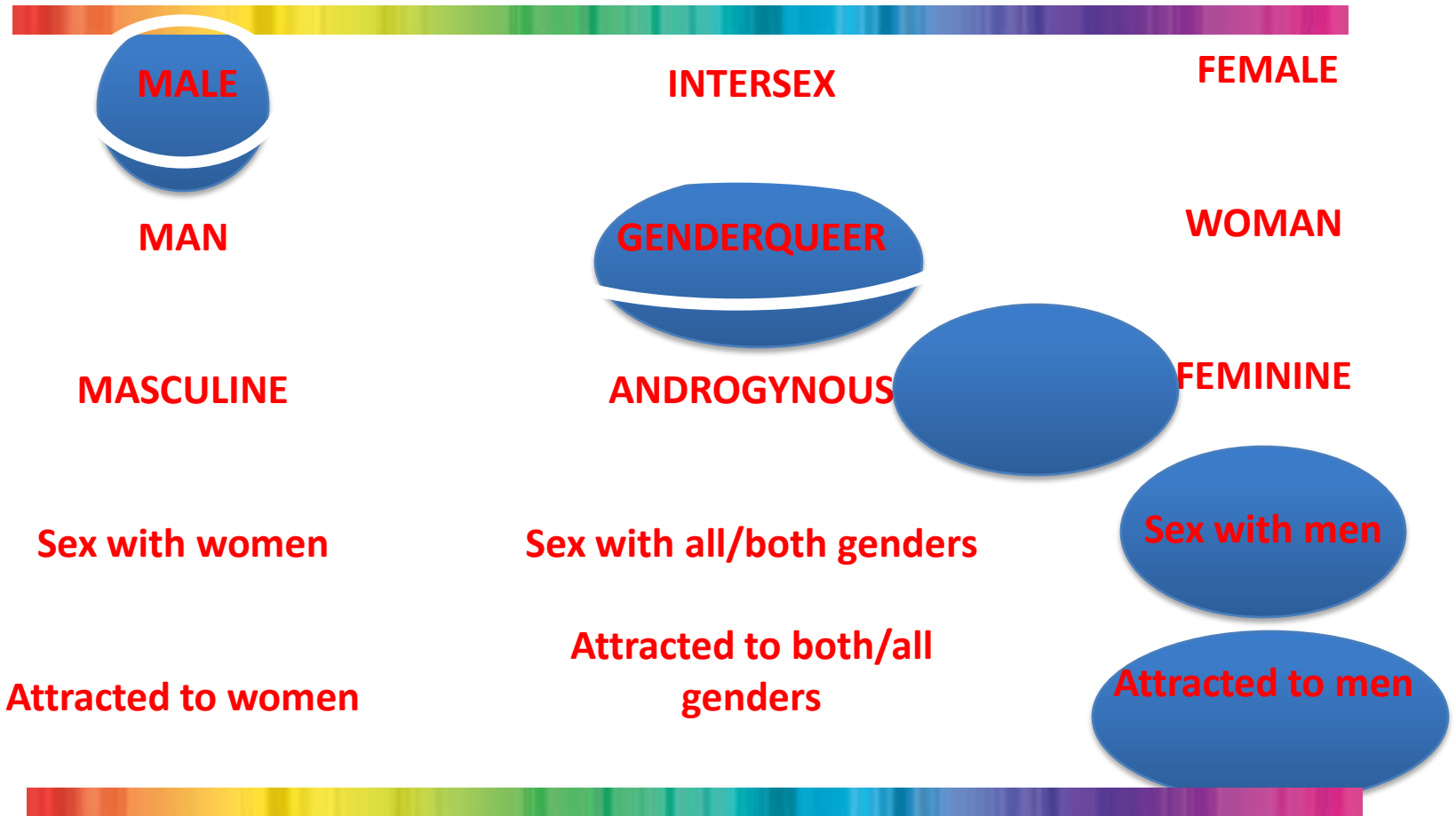
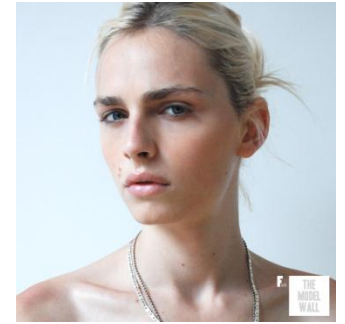


# Model Andrej Pejic

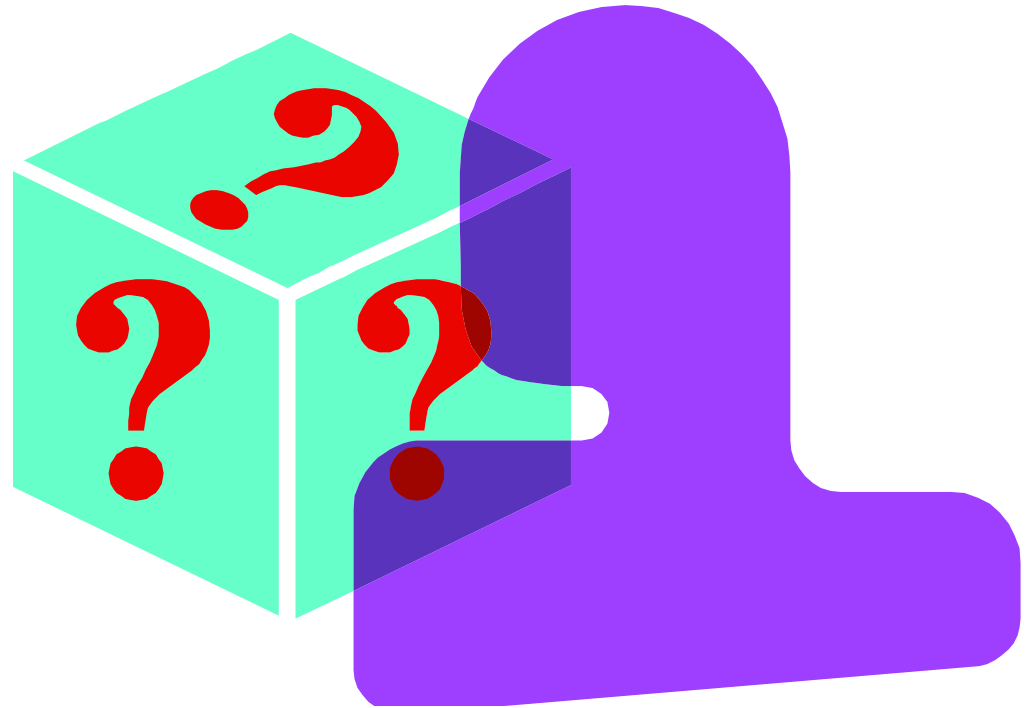




# Model Andrej Pejic



# Thoughts or Questions



Thank You for Celebrating & Supporting  
Intimate, Overlapping and Powerful LGBTIQ  
Identities!

