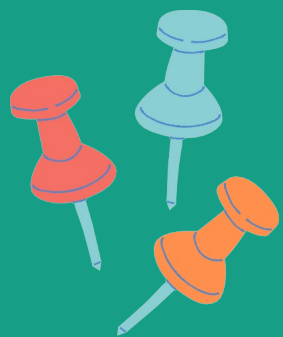
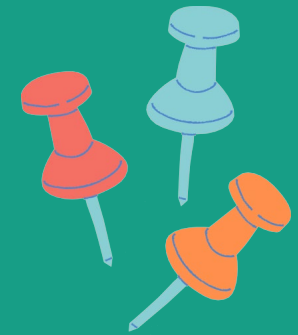
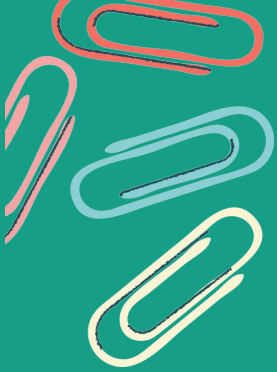


NCCU Exchange Program FAQ

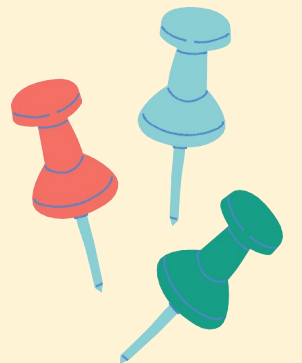
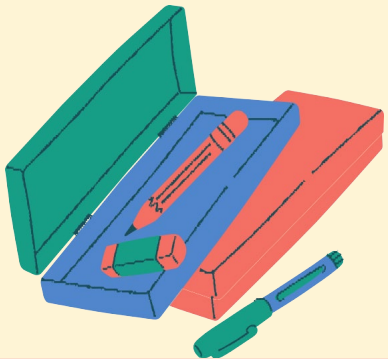
General Questions



Q1: Can I change the module during the exchange period?

No

Exchange students **CAN NOT** change the chosen module (e.g. from intensive Mandarin to part-time Mandarin) during the exchange period.

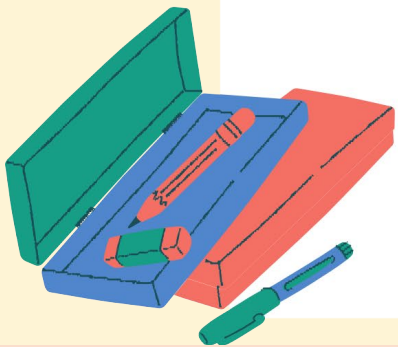


Q2 : What is the difference between university-level, college-level and department-level exchange?

Different level of exchange has different regulations. For example, some department-level exchange may be required to choose certain amount of courses under their enrolled department.

University-level exchange students can enroll under the department relevant to their major, and can choose courses across different departments at NCCU (though it is not guaranteed that you can always get the course you want to take).

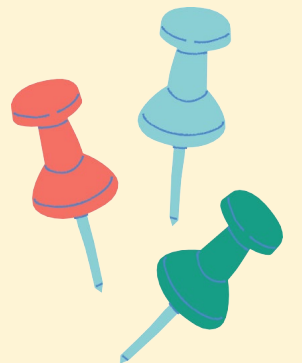
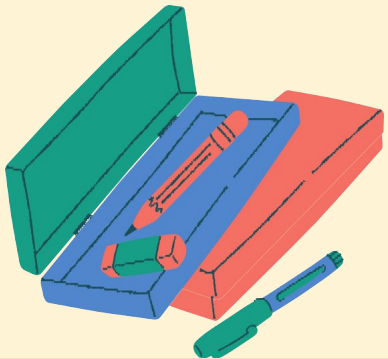
Also, only university-level exchange students can choose the “Intensive Mandarin + Academic courses” module.



Q3: When is admission decision announced?

For the Fall semester, the admission decision will be made by late May, and for the Spring semester, it is usually by late November.

The admission letter can be downloaded from the application portal if the application is accepted.



Q4: How to apply for on-campus accommodation?

You can choose your accommodation preference when making an application via our online portal.

OIC will try to arrange it according to your priority list; however, on-campus dorm and NCCU-iHouse is **not** guaranteed.

Please refer to OIC's website for more information:

<https://oic.nccu.edu.tw/Post/433>

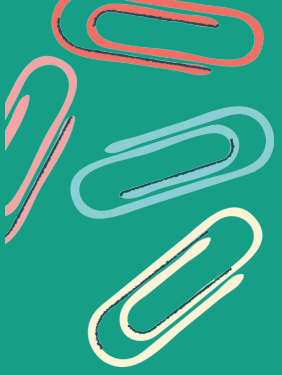
Q5: Why do I need to buy an overseas insurance before coming to Taiwan?

All NCCU students are required to pay a student safety fee (the fee is included in your NCCU registration bill), but it only covers **accidents**.

Please purchase an overseas medical insurance, which covers your study duration in Taiwan, from your home country. NCCU won't regulate which amount of reimbursement for your overseas medical insurance, but the following info is how much it'd cost if you visit a doctor here.

Normal cold/flu: NTD\$500~600 at clinics. Over NTD\$1000 at a public hospital.
Hospitalized overnight: Over NT\$2000 for a 4- person room at a public hospital.



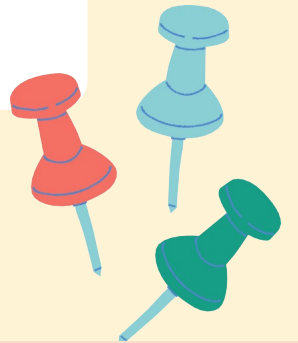
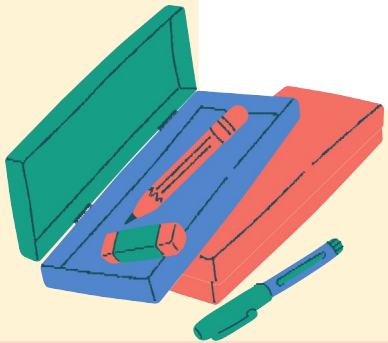


Program/
Department



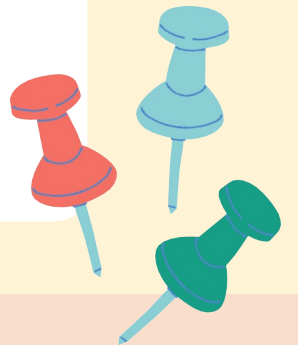
Q1: Am I able to choose which department I wish to enroll at NCCU?

All students, regardless of the chosen module, should choose the department at NCCU relevant to your current major. However, the department you chose reserves the right to make the final admission decision.



Q2: How will the exchange student's department be arranged/assigned?

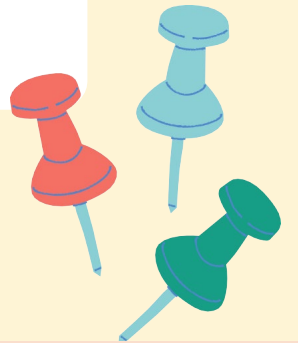
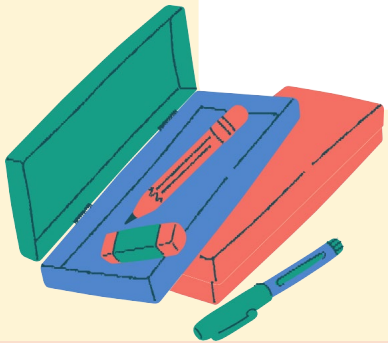
After you submit your application, both OIC and the chosen department(s) will review your application and supporting documents. Normally you can only enroll under the department relevant to your current major.



Q3: Am I guaranteed to be enrolled under the department I choose?

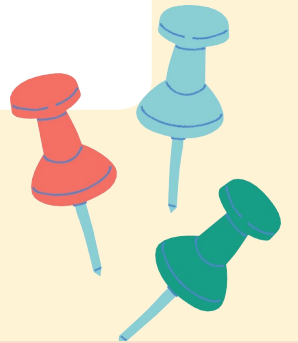
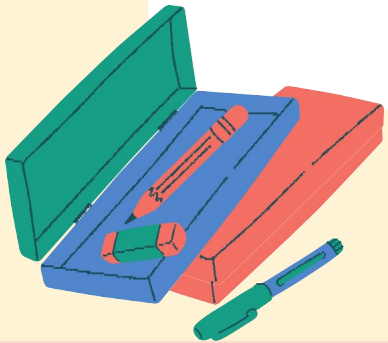
It is **NOT** guaranteed since the decision is made by each department.

Some departments or colleges (e.g. College of Informatics/ College of Science) may require a higher level of Mandarin proficiency (at least C1).



Q4: How to choose which department I wish to enroll at NCCU?

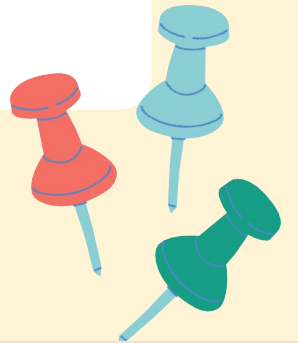
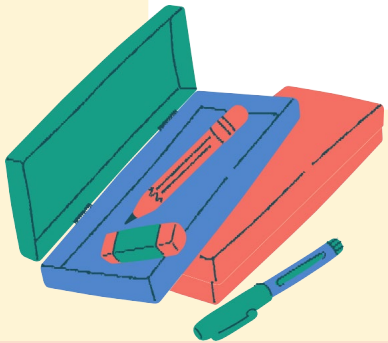
We strongly suggest students to choose the department related to your major. If you have special reasons to choose a department which is **NOT** related to your major, please state the reasons on the “Statement of Purpose”.



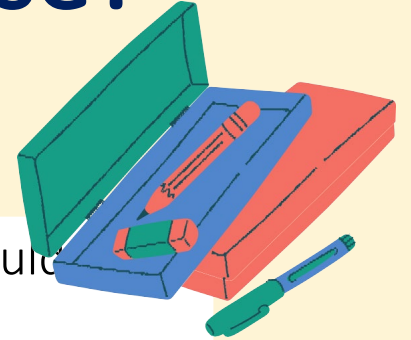
Q5: Am I able to take courses run by the department I am not enrolled under?

Yes, exchange students can choose courses across departments.

However, some departments will prioritize their major/double major degree students so the chance for exchange students getting courses varies according to the setting of the department.



Q6: What is the level of study should I choose?

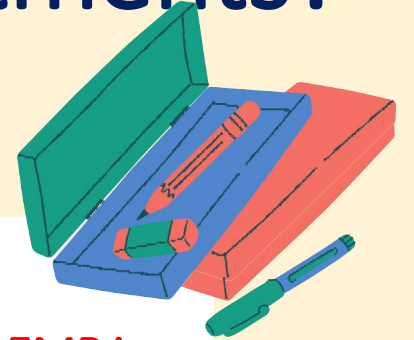


Please fill in the level of study you are now at your home university and you should be enrolled at the same level at NCCU as well.

For example, if you are currently at the second year of undergraduate program, please fill in undergraduate level. Then you will be enrolled as undergraduate at NCCU during your exchange.

There is one exception. For some schools, there are programs that students can get the master admission directly after their bachelor program in same school/same department. If you are currently in your last semester of your bachelor and will be the first semester of master when you come to NCCU, please choose the master level then and also provide us the supporting documents.

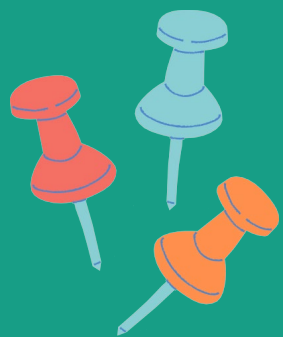
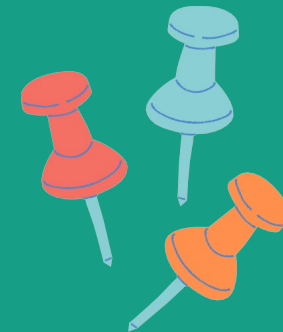
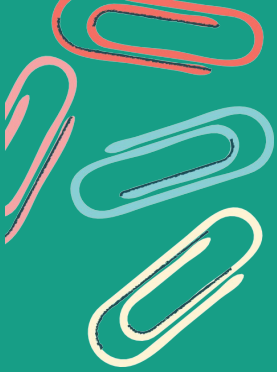
Q7: Any restrictions for choosing the departments?



Exchange students **CANNOT** enroll under or take any courses run by **IMAS, IMBA, EMBA**.

If you're a native speaker of a certain language, even if your major is your native language, you won't be able to enroll under the corresponding department. (E.g. If you're a French and major in French language or literature, you won't be able to enroll under Dept. of French. Except Mandarin Chinese speakers who wish to enroll under Dept. of Chinese).

Mandarin Module
(Intensive Mandarin/
Part-time Mandarin)



Q1: What are the restrictions for students who choose the “Intensive Mandarin + Academic courses” module?

This module is only open to university-level exchange students, thus students who are under college-level/department-level exchange **CANNOT** choose it.

Students of Mainland China, Hong Kong, Macau, and Taiwan nationality will **not** be able to choose any module with Mandarin language courses. However, they can still take other Mandarin-taught/English-taught academic courses at NCCU.

We have a strict regulation about students’ attendance for the “Intensive Mandarin + Academic courses” module. Students who are absent for certain extent will not be graded.



Q1: What are the restrictions for students who choose the “Intensive Mandarin + Academic courses” module?

If you choose “Intensive Mandarin + Academic courses” module, you can only choose academic courses that do **NOT** clash with the Intensive Mandarin courses.

The Intensive Mandarin is 12 credits and it is suggested that you take extra 1-2 courses (3-6 NCCU credits) only. You don't have to take extra academic courses though.

The maximum credits per semester you can take is **25** NCCU credits (undergraduate students).



Q2: What is the difference between Intensive Mandarin and Part-time Mandarin?

Intensive Mandarin is 12 NCCU credits (12 lecture hours per week) and Part-time Mandarin is 3 NCCU credits (3 lecture hours per week).

Both Intensive Mandarin and Part-time Mandarin course are free of charge to exchange students, but there is strict regulation for attendance.

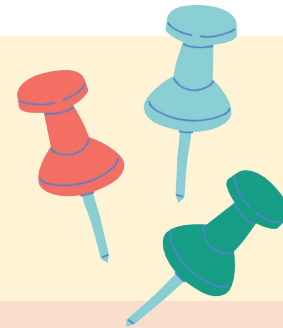
Students who choose Intensive Mandarin will be mainly focusing on Mandarin learning.

Students who choose Part-time Mandarin will be mainly focusing on learning academic courses.



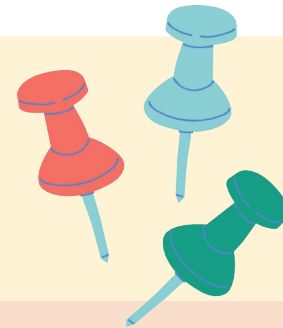
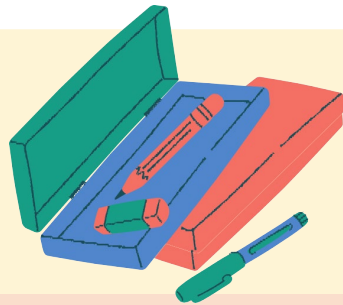
Q3: I never learnt Mandarin before (or with limited Mandarin proficiency), can I choose the Mandarin related module (“Intensive Mandarin + Academic courses”/“Part-time Mandarin + Academic Courses”)?

Yes, we have beginner class for both Intensive Mandarin and Part-time Mandarin.



Q4: I have learnt Mandarin before, which level will I be assigned to?

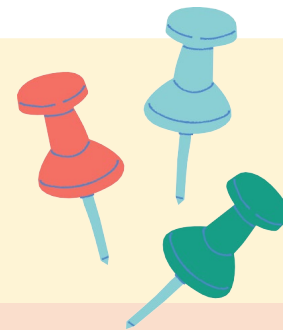
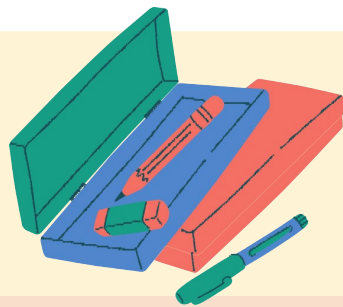
For both Intensive Mandarin and Part-time Mandarin courses, there will be an online listening and reading test and in-person oral test to decide your level.

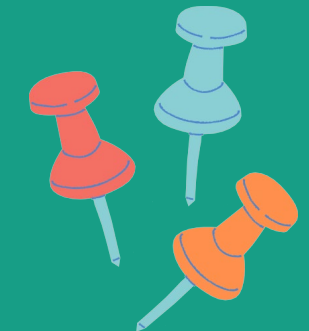
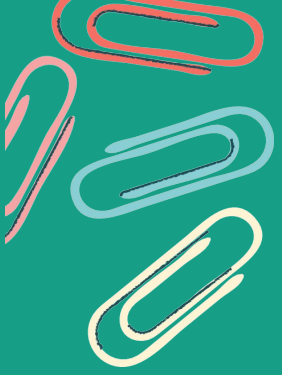


Q5: Can the Mandarin course credits be transferred?

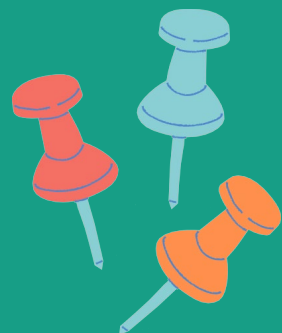
The Mandarin course credits will be listed on the NCCU official transcript, but your home university makes the decision on course credit transferring.

Please note that if you're a Master's student and take the Mandarin courses, only the grades, and not the credits, will be given.





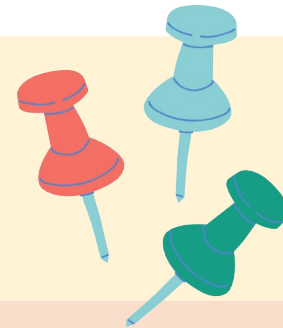
Online Application



Q1: What documents I need to submit via online application portal?

Nominees of our partner universities should fill in the online application via our portal.

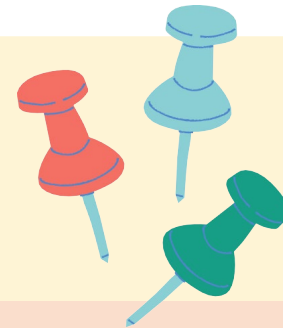
1. Printed online application form*1
2. Home university enrollment certificate in English*1
4. Official transcript in English from home university*1 (Please also attach the grading/credit system explanation)
5. Photocopy of passport*1
6. Statement of purpose in Chinese or English*1 (State why you choose Taiwan/NCCU and what you expect to study/experience during the exchange)
7. Passport-size (2x2) photos*1

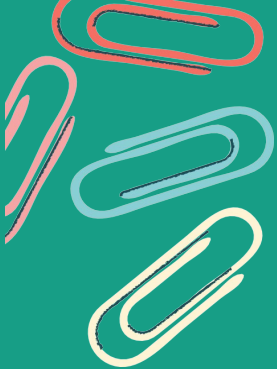


Q2: How do I know if my application is well- received by NCCU?

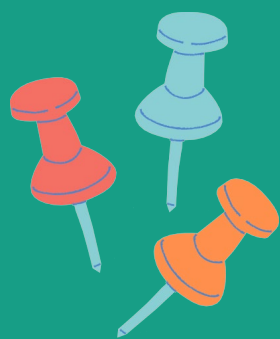
You can log in the online application system with the account information to review the application status.

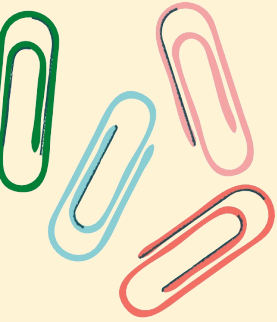
If you miss certain required documents, OIC will send you a systematic email to inform you of logging back to re-submit the missing documents.



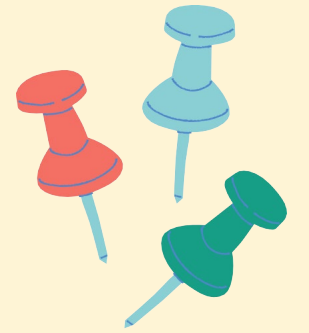


Mandarin Name

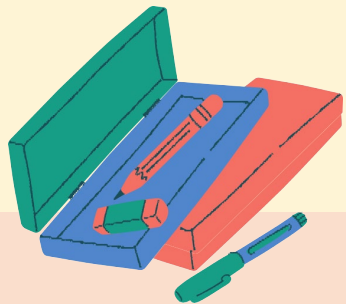




Q1: Do I need a Mandarin name?

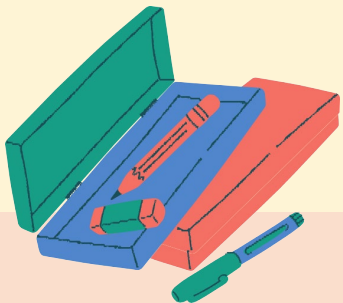


Yes, the Mandarin name is required by NCCU's registration system and the Mandarin name will also be shown on your NCCU student ID.



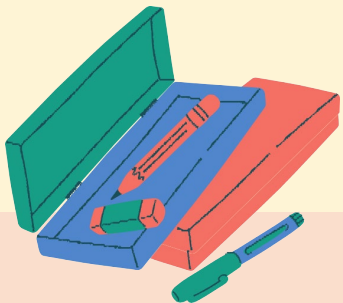
Q2: What if I don't have a Mandarin name?

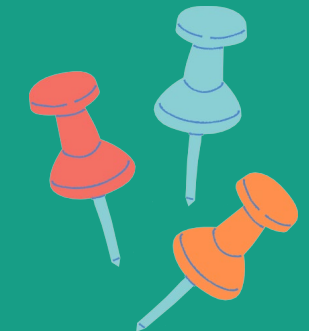
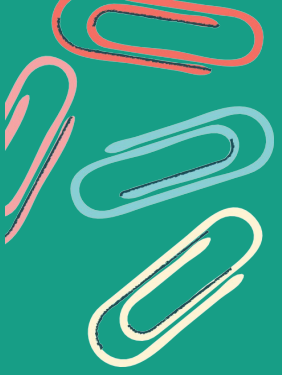
OIC will give you a Chinese name 😊



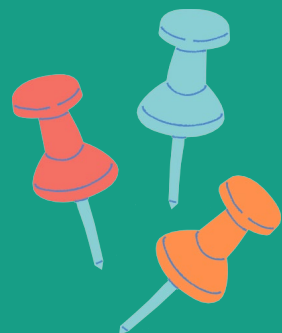
Q3: Can I provide NCCU the Roman spelling of my Mandarin name?

No, in Taiwan we use traditional characters. If you already have a Mandarin name, please indicate it in Mandarin characters.





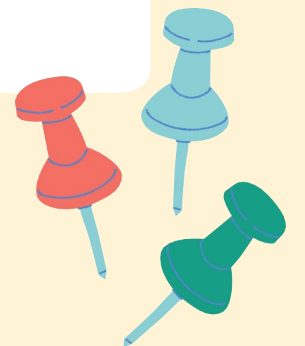
NCCU Courses

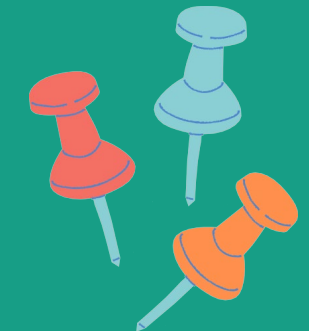
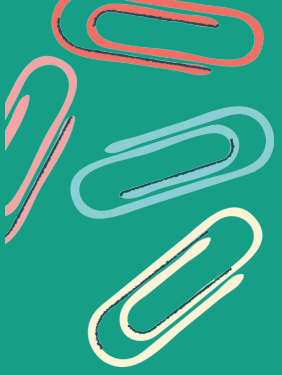


Q1: When will the courses for the exchange semester be announced?

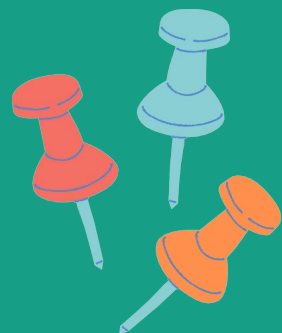
For the Fall semester, they are usually announced around late June and for the Spring semester, they are usually announced around late December. Please use the same semester of the previous year as reference before the courses are announced (E.g. Use 2018 Fall semester as the reference for 2019 Fall semester). The previous year course list will be similar but there will be modification.

Course search engine: <https://qrysub.nccu.edu.tw/>



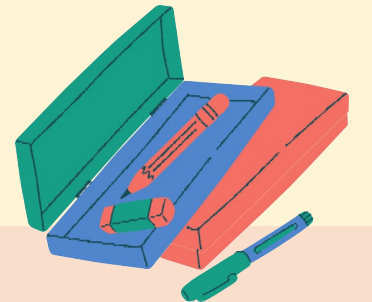
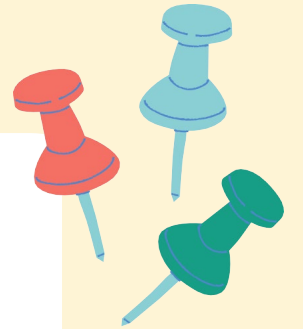


Credit Transfer



Q1: How many ECTS is 1 NCCU credit?

1 credit at NCCU = 18 lecture hours = 2 ECTS.



Q2: Will the NCCU credit transfer back to my home university?

The course equivalencies and credit transfer will be decided by your home university. OIC will send the transcript to your home university's international office.

